



ASU Submission

National Skills Commission

Care Workforce Labour Market Study



[Redacted]	[Redacted]
[Redacted]	[Redacted]
[Redacted]	[Redacted]
[Redacted]	[Redacted]
[Redacted]	[Redacted]
[Redacted]	[Redacted]
[Redacted]	[Redacted]



Contents

1.	The ASU	3
2.	Recommendations	3
3.	Workforce attraction, retention and development in the care workforce	3
4.	The Disability Sector	5
	4.1 Disability support work as an emerging area of practice	5
	4.2 Skills development and retention in the disability sector	7
5.	Data gaps.....	11
6.	Conclusion.....	12

1. The ASU

The Australian Services Union (ASU) is one of Australia's largest unions, representing approximately 135,000 members.

ASU members work in a wide variety of industries and occupations in both the private and public sector. Relevantly, the ASU is the largest union of workers in the social, community and disability services sectors. Our members predominantly work in non-government, and not-for-profit organisations that support people experiencing or at the risk of experiencing crisis, disadvantage, social dislocation, or marginalisation. The ASU has a significant number of members employed in the care workforce by state and local governments.

Of specific relevance to this Study, the ASU represents workers who are employed in:

- Disability services, including residential care.
- Community services, including:
 - Aged care services
 - Mental health services
 - Community transport services
 - First Nation People's services
 - Family support services
 - Health and mental health services
 - Crisis accommodation for women, children, families, young people, and men
 - Sexual assault, domestic and family violence services
 - Youth and child protection services
 - Out of home care for children and young people at risk
 - Homelessness, housing, and tenancy services
 - Alcohol, gambling and other drugs of addiction and rehabilitation services
 - Migrant and settlement services
 - Community legal services
 - Community and neighbourhood services
- Local government home and community care ('HAC')

The ASU is pleased to provide this submission to the National Skills Commission for the Care Workforce Labour Market Study.

2. Recommendations

The ASU makes the following recommendations to this Study:

Summary of Recommendations:

1. All government tenders should be based upon a floor price below which no tender can be lodged.
2. All workers within the NDIS should have access to a Portable Training Entitlement, as set out in this submission and in the proposal by the Australia Institute's Centre for Future Work.
3. The ANZCO Aged and Disabled Carers should be split into two unique occupations.
4. Develop agreed workforce data standards and definitions to ensure better data is collected. This would include qualifications, training and supervision expectations. Data collection on these workforce statistics should be undertaken by the ABS.

3. Workforce attraction, retention and development in the care workforce

The care workforce is struggling to attract, retain and develop its staff. Employment conditions for the care workforce are characterised by low pay rates and insecure employment practices, including:

- a significant proportion of the workforce is engaged on a part-time and/or casual basis;
- a significant proportion of employees are engaged on temporary contracts;

- limited access to paid overtime;
- high turnover of employees leading to very limited access to long service leave;
- low wages meaning limited accumulation of superannuation benefits;
- high levels of unpaid work;
- employees undertaking unpaid training in their own time.

These characteristics are directly linked to short-term government funding arrangements tied to the bare-minimum safety net entitlements of the modern award system.

For example, the rapid growth of NDIS participants have intensified pressure on disability service providers and disability workers alike, to ensure that the right skills are available to meet the sector's rapidly changing and expanding service requirements.

However, Disability support workers, have reported the current NDIS pricing regime does not provide for secure, well-paid, well-trained, skilled jobs with career paths. We consider that a number of key assumptions underpinning the NDIS unit price are flawed, in particular:

- Classification and pay level of disability support workers.
- Client-facing time assumptions, and inadequate consideration of time required for administration, supervision, training, professional development and collaboration.

The traditional model of permanent employment with a single service provider is currently being eroded by alternative employment models, in particular:

- A rise in the casualisation of workforce as providers shift risks associated with flexible service delivery onto the workforce;
- A rise in instances of employment across multiple disability service providers as workers try to maximise a stable income in the face of provider hesitancy to embrace permanent full-time work under the NDIS;
- A rise in self-employment as a sole trader providing services directly to clients as workers seek to cut out the "middle man" of a controlling employer limiting their own hours and flexibility;
- A rise in individual contracts between the client and the support worker. Workers are required to have their own ABN, and liability insurance etc.
- A rise in "gig-economy" work as platform services (e.g. uber style services) enter the market; and
- A rise in people with disability wanting to employ directly their own support workers to have greater control over the type of support they want and when they want it.

Unfortunately, there is no clear plan to ensure that workers in novel employment arrangements have adequate skills and qualifications.

Low wages and precarious conditions for disability support workers limit the attractiveness of the disability sector to skilled workers and increase employee turnover. There is little incentive for employees to seek additional skills or qualifications, because the funding arrangements limit the scope for career progression in the industry. Similarly, the funding arrangements and employment practices limit the opportunities for employees to undertake training.

In the broader care workforce, such as the mental health sector, the reliance by governments upon competitive tendering in the social and community services sector has forced organisations into competition to 'win' funding to deliver a service for the lowest price for government.

This contested model means that, in order to attract government funding, organisations must offer the cheapest product. Inevitably this means providers employ lower skilled (and therefore lower paid) workers, with less time to spend on each client, and bigger workloads.

The introduction of private, for-profit enterprises has redirected organisations from a primary motive to deliver the highest possible standard of service, to the maximisation of profit for its owners and shareholders.

Competitive tendering favours larger, established, and for-profit organisations that have more staff and resources to devote to tender writing. In fact, some larger organisations now employ full time tender writers and even smaller organisations often pay to employ professional tender writers when important tenders are due. This squeezes out smaller organizations and ‘niche’ organisations that respond to specific community needs.

Federal and state governments argue that competitive tendering– encourage ‘efficiency’, and the ‘best’ will win tenders, leading to improvement in service quality by providing users with ‘choice’ about the services they access.

The ugly reality is that competitive tendering has led to a downward pressure on funding, particularly on labour costs. There has been an increase in the ‘on-demand’ workforce, employed on insecure and fixed-term employment contracts. Competitive tendering has directly led to:

- A significant proportion of employees in the sector being engaged on a part-time, fixed term contract or casual basis.
- There is almost non-existent access to paid overtime.
- There is a high turnover of employees due to short grants and contracts.
- Short term funding grants and contracts result in very limited access to long service leave (except in states like the ACT, Victoria and Queensland which have implemented portable long service leave schemes for community sector workers)
- Low wages mean limited accumulation of superannuation benefits.
- There are very high levels of unpaid work.
- Little or no training, or employees undertaking unpaid training in the employees own time.
- Little or no professional (clinical) supervision
- Little or no non-work support (training leave, Paid Parental Leave, Family and Domestic Violence Leave, COVID leave etc.)
- Little or no end-of-employment support (redundancy, outplacement etc.)

In response to this deteriorating funding situation arising from competitive tendering, the ASU has proposed that all government tenders should be based upon a floor price below which no tender can be lodged.

This would mean that rather than a ‘race to the bottom’ by community sector organisations, competing for vital funds by cutting back on essential workforce expenses, all tenders would be required to include funding provision for basic standards.

Recommendation:

1. All government tenders should be based upon a floor price below which no tender can be lodged.

4. The Disability Sector

4.1 Disability support work as an emerging area of practice

The establishment of the National Disability Insurance Scheme (NDIS) has led to significant changes in the way people with disability access supports and services. As a consequence, the disability sector has also undergone significant changes, in particular, the growth and requirements of the disability support workforce.

The aim of the NDIS is to support the independence and social and economic participation of people with disability, to provide reasonable and necessary supports, to enable people with disability to exercise choice and control in the pursuit of their goals and the planning and delivery of their supports. The human rights of people with disability are the guiding principles of the NDIS and are embedded in legislation¹ which gives

¹ National Disability Insurance Scheme Act 2013

effect to Australia's obligations as a signatory to the United Nations Convention on the Rights of Persons with Disabilities (CPRD).²

The NDIS was established as a scheme for the provision of supports and services chosen and controlled by people with disability participating in the scheme.

The NDIS Quality and Safety Framework was developed to implement a nationally consistent approach to ensure high quality supports and safe environments for all NDIS participants. The NDIS and the Quality and Safeguards Framework are underpinned by legislation that established the NDIS Quality and Safeguards Commission (the Commission) as the regulator to monitor compliance with NDIS practice standards, codes of conduct, rules, guidelines and policies for the provision of all NDIS supports and services. These regulations apply to providers and workers in the NDIS sector.³

The disability workforce across Australia has grown significantly to meet the growth in the number of NDIS participants since the introduction of the NDIS. The recently launched NDIS National Workforce Plan: 2021-2025 identifies the need to grow and train the NDIS support workforce to meet the needs and goals of NDIS participants. The Plan points to the need for specialist training for support workers to build a capable workforce that can deliver the complexity and diversity of supports NDIS participants need. The Plan recognises there are differences in the workforce requirements of the NDIS sector from other roles within the broader care and support workforce such as the aged care and veteran care sectors.⁴

The current care and support workforce faces a number of challenges including attracting new workers to the sector, poor perception of the sector, variable and disconnected work conditions and limited training opportunities. These challenges go some way to explaining why 43 per cent of support worker vacancies have been left unfilled due to a lack of suitable or qualified candidates. These challenges are particularly acute in regional and remote communities and in attracting and retaining culturally and linguistically diverse workers and Aboriginal and Torres Strait Islander workers.

A challenge that has been present since the introduction of the NDIS has been how the aims and guiding principles of the NDIS will translate into practice in the supports and services NDIS participants receive. NDIS participants place more importance on the values and behaviours of workers, than on the skills they bring.

Since the introduction of the NDIS the ASU has undertaken consultation with workers, employers and people with disability through surveys and focus groups on skills and qualifications in the support sector. The results of these surveys and focus groups have provided similar answers, to other research, on what NDIS participants value in a support worker. People with disability emphasise the importance of attitudes which are founded on respect as being the starting point for all skills. Asked to rank the skills they value most people with disability ranked highly skills which are informed by a human rights approach and a person centred approach, closely followed by communication and team work skills.

The NDIS National Workforce Plan prioritises the need to develop accredited micro-credentials to enable support workers to attain the skills needed to meet NDIS standards and service expectations. This is in direct response to the diversity and complexity of skills needed to support NDIS participants⁵. A support worker can be expected to:

- work with participants who needs transport support,
- provide PEG, feeding and/or swallowing support,
- implement behaviour support plans,
- provide positive behaviour support.

² United Nations Convention on the Rights of Persons with Disabilities <https://www.un.org/development/desa/disabilities/convention-on-the-rights-of-persons-with-disabilities.html>

³ NDIS Quality and Safeguards Commission <https://www.ndiscommission.gov.au/>

⁴ NDIS Workforce Plan: 2021 - 2025 <https://www.dss.gov.au/disability-and-carers-publications-articles/ndis-national-workforce-plan-2021-2025>

⁵ NDIS Workforce Plan: 2021 - 2025 <https://www.dss.gov.au/disability-and-carers-publications-articles/ndis-national-workforce-plan-2021-2025>

- provide personal care such as toileting and showering, and
- support the recreational and artistic activities of a participant.

A support worker will also support people with disability from a wide demographic and age range. A worker will support:

- children,
- adolescents, and
- adults up to 65 years of age and beyond in some circumstances.

Support workers work with people with a range of disabilities:

- sensory,
- cognitive,
- physical,
- acquired brain injury, and
- psychosocial disabilities.

Different disabilities require different support practice approaches and skills. The practice of disability support work has developed since the introduction of the NDIS to enable workers to meet NDIS practice standards, comply with the NDIS Code of Conduct and support people with disability to realise their human rights under the NDIS.

It is clear that disability support work is emerging as an area of practice within the care and support sector that requires unique skill sets that will meet the complexity and diversity of support needs of NDIS participants.

4.2 Skills development and retention in the disability sector

To better support people with disability it is vital to attract and retain workers with the right skills. Greater choice and control for people with disability over the types of supports they want and need means the disability workforce needs to be supported to continuously develop new skills and qualifications relevant to the diverse needs of individual clients.

Disability sector workers are highly skilled and passionate about what they do – but their capacity to have their skills recognised, to develop new skills and to attain relevant person-centred qualifications is severely limited. Disability support work demands physical and interpersonal skills and high level communication skills. The range of cases one worker will deal with on a daily basis are diverse and complex.

For these reasons we need to invest in the training and development of disability workers in a strategic and planned way. There is a common misperception that those who work in disability services are unskilled and that workers in the industry do not need any special qualifications to work within it. This is definitely not the case with a recent survey by the University of New South Wales finding 80% of workers held a qualification of Certificate IV and above⁶.

We believe a workforce that is highly skilled, knowledgeable, experienced and well remunerated will be able to deliver the high quality of service delivery NDIS participants require.

Entry level qualifications

To understand disability rights and principles and to ensure all workers abide by the NDIS Act and NDIS Code of Conduct, we believe it is essential there needs to be entry level qualifications for workers. An entry level qualification would provide safeguards through regulated standards to ensure workers entering the disability workforce have the requisite skills and competencies needed to work with complex and challenging cases.

⁶ University of New South Wales, Working in new disability markets: a survey of Australia's disability workforce, May 2020 [Online] <https://apo.org.au/node/305121>

A mandatory entry level qualification would demonstrate a commitment to the disability sector and would ensure every single worker understands disability rights and principles, such as: abuse prevention systems; abuse reporting procedures and standards; ethical behaviour and human rights provisions. A mandatory entry level qualification would also ensure a standardised level of knowledge and skill for the disability workforce.

Ongoing professional development

Encouraging staff to grow professionally within the disability sector is of great importance in retaining quality staff, as well as making jobs more attractive to prospective workers. This can be done through training opportunities and better recognition and remuneration of skill levels. This would address issues of attraction and retention, as well as encouraging staff to involve themselves in training programs to increase their classification, and remuneration.

Ongoing professional development is a vital component in establishing and sustaining a professional workforce. We believe it should be a requirement for all disability service providers to provide regular and ongoing professional development to assist workers with developing specialisations, as well as keeping up with emerging practices in the disability sector.

Training and professional development programs help to ensure the disability community and the general public have the confidence that the workforce understands the legal requirements necessary to perform their roles, and to ensure the highest level of quality care.

Workforce development has been flagged as a major concern for many disability service providers, with several reporting challenges in being able to provide sufficient and effective professional development in the current funding environment⁷.

The NDIS pricing model has had significant consequences for training and development in the sector and for the capacity of providers to participate actively in providing a high standard of training and supervision – or any training at all. There have been cut-backs in the time allocated for training; team meetings have all but disappeared; supervision has been severely curtailed; and large numbers of casual workers are being newly employed with almost no supervision at all. Many workers and providers have told us that support staff are not paid to attend regular team meetings or attend training and development activities.

This is not a reflection on those providers – who have often been as concerned about this situation as we are, but it is a very real problem when considering the effective implementation and delivery of training in this sector – which absolutely must include ongoing supervision, ongoing upskilling and active participation by the workplace in all of these aspects of learning and skills development.

It is currently very expensive to undertake accredited skills development. It involves potential and actual students paying upfront fees in many cases, and needing to take time away from shifts. In a sector in which the majority of workers are not well paid and employed on a casual or part time basis, relying upon shifts with often multiple employers, it is difficult to access training other than in-service training when this is available

In-service training is more likely to be not accredited and delivered in a less than ideal manner. It has less value in terms of career development or portability between employers as it tends to be more enterprise-specific.

Portable Training Entitlement Scheme

During the Roundtable the ASU attended with the National Skills Commissioner we highlighted the need for a career pathway that allows for a series of connected education and training opportunities, sometimes referred to as stackable credentials, that equip job seekers to enter and advance in an industry or occupation.

⁷ University of New South Wales, How is the Disability Sector Faring? 2020 Report, February 2020 [Online] <https://www.csi.edu.au/research/project/how-disability-sector-faring-2020-report/>

Lifelong learning and the stacking of credentials, degrees, and other qualifications are becoming more important and more prevalent, especially as the COVID pandemic has allowed workers to explore and pursue additional credentials to strengthen their current employment situation or prospects.

One way we can achieve the requirements of entry level qualifications, ongoing professional development and stackable credentials is through a portable training entitlement. In 2018 the ASU commissioned the Australia Institute, Centre for Future Work to develop the Portable Training Entitlement Scheme, please refer to Appendix 1.

The Portable Training Entitlement scheme dedicates funding for induction training, foundation qualifications as well as building training and professional development capacities in the industry as a whole, at an organisational level. Funding would provide fiscal support to providers to build their internal capacity to deliver high-quality supervision and professional development in support of quality standards within their workplaces. It would also support the development of training capacity within RTOs to deliver training to workers in the skills associated with the NDIS's consumer-directed model.

Our proposed Portable Training Entitlement scheme would involve funding three stages of training for the workforce:

Stage One: Induction to Disability

This is a minimal induction training package provided to new workers starting with NDIS providers. It would involve 30 hours of on-line and face-to-face orientation to the goals and principles of the NDIS, and core features such as the code of conduct and basic safety practices; and 20 hours of supervised contact with people with disabilities. Importantly it would be an accredited VET competency that could build towards a formal qualification.

Stage Two: Foundation Qualifications

This foundation entry-level course would be required for all new disability support workers within the first 18 months of their employment in NDIS-funded service delivery. It is accredited Cert III specialist NDIS training. The course would involve 90 hours of classroom training, and 120 hours of workplace training and assessment. This stage would also include assessment of RPL for existing workers with experience and previous training to attain a formal Cert III.

Stage Three: Portable Training Entitlement for Continuous Upgrading

The largest element of the comprehensive NDIS training program would be the establishment of a portable training entitlement system, through which NDIS providing workers would accumulate credits toward additional training. Training credits are earned as workers complete NDIS-funded work – whether with a provider-employer (as permanent or casual worker), or even directly for NDIS participants (working as sole traders). Workers would then be able to use these credits to enrol in accredited training of their choice, relevant to specialist disability support work. The training would be accredited units of competency that build further advanced qualifications over time. The credit would also cover the costs of release from work so they are able to undertake the study. It is estimated that the average disability support worker would accumulate credits for one three-day paid training course per year under the scheme.

All three parts would rely on reviewing the range of appropriate VET accredited courses so they respond better to the diverse needs and aspirations of people with disability and build career paths for the growing workforce. (E.g. creation of new Diploma, Advanced Diploma and specialist Cert IV disability courses – e.g. Mental Health, Nutrition etc). This review should occur nationally and be informed by experts including people with disability and their advocates.

The system would be administered by creating a federal authority such as a Disability Services Training Authority which could easily be housed within soon to be established NDIS Quality and Safeguards Commission. The NDIS Quality and Safeguards Commission is already tasked with overseeing the screening of all workers and registering providers etc.

The benefits of this scheme would be a win not only for the workforce, but also participants, employers and the TAFE Sector:

NDIS workforce: Fosters development of meaningful career paths and specialisation which will lead to greater retention and job satisfaction. It will also provide more attractive jobs for new workers to join the sector knowing they will be supported with induction and ongoing development. This is the fastest growing employment area in the country and investment in training is needed to assist workers transition from declining industries.

Participants: No impact on their individual package costs - it is a separately funded program. It will provide for better retention of good workers. Attracting new workers to the sector that want to stay and build careers but who are also sufficiently inducted into NDIS person centred care and the code of conduct. Person centred specialisation within the workforce so that NDIS supports can be responsive to their needs and aspirations.

Employers: Better support for the workforce means less pressure on employers to do stand-alone training of NDIS workers that is currently replicated provider to provider but not accredited nor of a meaningful or specialised nature. Greater savings from longer term retention of staff. Greater pool of employees to address this impending workforce crisis.

TAFE Sector: Support for public TAFE system via ongoing injection of students and an innovative model for TAFE to play longer term role in human services professional development.

The Cost: The total cost of proposal is included below noting it represents less than one cent in the dollar of total government expense on NDIS. This is the estimated total government contributions to be split between state and federal governments via a partnership arrangement as NDIS workforce growth and retention is a joint responsibility like the NDIS itself.

A Portable Training Entitlement for the disability sector⁸

1. All recognised foundation training for the industry should be based on qualifications registered through the Australian Qualifications Framework.
2. All training should be conducted by public or selected non-profit RTOs, and quality audits undertaken by ASQA to ensure that RTOs have the training infrastructure to deliver educational outcomes that are of the highest possible level of quality. Incremental funding should be prioritised towards TAFES as the highest-quality publicly funded RTOs.
3. Vocational pathways available to workers should be extended through the development of qualifications at Diploma and Advanced Diploma level on the Australian Qualifications Framework.
4. That the content of the new compulsory induction be reviewed (in consultation with all stakeholder organisations, including representatives of people with disabilities) to ensure that it includes a workplace component, and information about the requirements on workers under the proposed new Code of Conduct. Assessment standards should also be introduced to ensure that the learning objectives are achieved by all students completing the induction.
5. That it should be compulsory for employers to support workers to successfully complete the induction programme within 6 months of being newly employed.
6. That an accreditation and registration regime be introduced to support improvements in quality standards in the disability sector. Registration should be based on the achievement of a minimum foundation qualification at Certificate III level; with the proviso that newly employed workers enrolled in a Certificate III could apply for provisional registration for up to 18 months.
7. That an independent Capacity Building Fund be established under the NDIA, jointly endowed by the Commonwealth and State governments, separate from the funding mechanisms associated with the NDIS unit pricing system.

⁸Ryan R and Stanford J A Portable Entitlement Training System for the Disability Support Services Sector. The Australia Institute Centre for Future Work 2018

8. The Capacity Building Fund would cover the full costs of compulsory induction and foundation training for newly hired disability support workers (and the cost of completing RPL procedures for existing workers), as a means of quickly boosting the number of skilled workers in the industry.
9. The Capacity Building Fund would also cover the costs of a portable training entitlement system, under which disability support workers accumulate credits for paid training hours and then utilise those credits to enrol in qualifying courses.
10. The Capacity Building Fund would also fund organisation-level investments in training capacity, by both public and qualifying non-profit RTOs, and by disability service providers.
11. That parties to the SCHADS award consider how to develop and implement an extended structure of classifications and pay that will reflect the accumulating advanced vocational qualifications attained by disability support workers under the proposed portable training entitlement.
12. That the SCHADS award explicitly recognise the right of disability support workers to utilise their paid training entitlements in working hours, on course and vocational streams of their choice.
13. That the Quality and Safeguards Commission include an independently constituted Disability Services Training Administration (DSTA), with responsibility for tracking the portable training entitlement for workers across the disability support sector, and regulatory oversight of curriculum, training, and quality assurance (in collaboration with relevant VET authorities).

Recommendation:

2. All workers within the NDIS should have access to a Portable Training Entitlement, as set out in this submission and in the proposal by the Australia Institute's Centre for Future Work.

5. Data gaps

In our experience workforce data for the community services sector and disability workforce is difficult to obtain as much of the data is piecemeal and inconsistent. A major problem is that Aged Carers and Disability Carers are classified under the same ANZCO occupation unit level (4231 Aged and Disabled Carers), which makes it incredibly difficult to know exactly how many workers are in each occupation. Without knowing how many workers are in each occupation, it is difficult for stakeholders to cost any proposals or initiatives they are recommending to federal and state governments.

We note long ago the ABS abandoned detailed statistics of the Social & Community Services and Disability workforce which has hindered planning and understanding the nature of one of Australia's fastest growing group of workers.

We believe there is a need to develop agreed workforce data standards and definitions to ensure better data is collected so that the sector has accurate data about the size, scope, activities and needs of the workforce – including qualifications, training and supervision expectations. We recommend that the ABS should be charged with the responsibility of collecting the data for this sector.

Recommendation:

3. The ANZCO Aged and Disabled Carers should be split into two unique occupations.
4. Develop agreed workforce data standards and definitions to ensure better data is collected. This would include qualifications, training and supervision expectations. Data collection on these workforce statistics should be undertaken by the ABS.

6. Conclusion

The care workforce is struggling to attract, retain and develop its staff. Low wages and precarious conditions for workers limit the attractiveness of the care workforce sector to skilled workers.

The capacity of the care workforce to have their skills recognised, to develop new skills and to attain relevant person-centred qualifications is severely limited. It is clear that disability support work is emerging as an area of practice within the care and support sector that requires unique skill sets that will meet the complexity and diversity of support needs of NDIS participants.

To maximise the potential of the NDIS as an engine of jobs and economic growth, the system desperately needs a strong and immediate strategy for ongoing investment in workforce development and training. Workers need an opportunity to accumulate skills. We consider that a portable training entitlement system is essential to ensuring we build meaningful careers and skills in the care workforce.

A Portable Training Entitlement System for the Disability Support Services Sector

By Dr. Rose Ryan and Dr. Jim Stanford
The Centre for Future Work at the Australia Institute

April 2018

About The Australia Institute

The Australia Institute is an independent public policy think tank based in Canberra. It is funded by donations from philanthropic trusts and individuals and commissioned research. We barrack for ideas, not political parties or candidates. Since its launch in 1994, the Institute has carried out highly influential research on a broad range of economic, social and environmental issues..

Our Philosophy

As we begin the 21st century, new dilemmas confront our society and our planet. Unprecedented levels of consumption co-exist with extreme poverty. Through new technology we are more connected than we have ever been, yet civic engagement is declining. Environmental neglect continues despite heightened ecological awareness. A better balance is urgently needed.

The Australia Institute's directors, staff and supporters represent a broad range of views and priorities. What unites us is a belief that through a combination of research and creativity we can promote new solutions and ways of thinking.

Our Purpose – ‘Research That Matters’

The Institute publishes research that contributes to a more just, sustainable and peaceful society. Our goal is to gather, interpret and communicate evidence in order to both diagnose the problems we face and propose new solutions to tackle them.

The Institute is wholly independent and not affiliated with any other organisation. Donations to its Research Fund are tax deductible for the donor. Anyone wishing to donate can do so via the website at <https://www.tai.org.au> or by calling the Institute on 02 6130 0530. Our secure and user-friendly website allows donors to make either one-off or regular monthly donations and we encourage everyone who can to donate in this way as it assists our research in the most significant manner.

Level 1, Endeavour House, 1 Franklin St
Canberra, ACT 2601
Tel: (02) 61300530
Email: mail@tai.org.au
Website: www.tai.org.au

About the Centre for Future Work

The Centre for Future Work is a research centre, housed within the Australia Institute, to conduct and publish progressive economic research on work, employment, and labour markets. It serves as a unique centre of excellence on the economic issues facing working people: including the future of jobs, wages and income distribution, skills and training, sector and industry policies, globalisation, the role of government, public services, and more. The Centre also develops timely and practical policy proposals to help make the world of work better for working people and their families.

www.futurework.org.au

About the Authors

Dr. Rose Ryan has worked in employment relations and workplace practices in Australia and New Zealand for over 30 years, including work for several universities and senior policy roles in the NZ public service.

Dr. Jim Stanford is Economist and Director of the Centre for Future Work.

This report was commissioned by the NSW Branch of the Australian Services Union.



Table of Contents

Abbreviations.....	4
Summary.....	5
I. Introduction and Overview.....	9
II. The Disability Support Services Sector	12
Work and workers in the disability support sector	12
III. Implementation of the NDIS.....	15
The NDIS funding model.....	16
Improving quality.....	19
Summary.....	22
IV. Training, Skills and Qualifications.....	23
Vocational education and training in the sector	24
Other training in the sector	26
Skills implications of consumer directed support	27
Funding for sector development.....	31
Addressing quality issues.....	33
Training implications	34
V. A New Model for Training and Qualifications in Disability Services	36
The importance of a national training framework.....	37
Induction into the industry.....	41
Occupational registration and mandatory minimum qualifications.....	43
A Capacity Building Fund for the sector	46
Cost estimates	54
Implications for the SCHADS award	58
The Disability Services Training Administration	59
VI. Summary and Conclusions	62
List of recommendations.....	63
Bibliography.....	65

Abbreviations

AQF	Australian Qualifications Framework
ASQA	Australian Skills Quality Authority
ASU	Australian Services Union
DSTA	Disability Services Training Administration (proposed in this paper)
NDIA	National Disability Insurance Agency
NDIS	National Disability Insurance Scheme
NDS	National Disability Service (provider peak body)
QSF	Quality and Safeguarding Framework
RCM	Reasonable Cost Model
RTO	Registered Training Organisation
SCHADS	Social, Community, Home Care and Disability Services modern award
SSO	Skills Services Organisation

Summary

The NDIS Act is often described as the largest social reform in Australia since the introduction of Medicare in 1975 (Productivity Commission, 2017; Cortis et al., 2017). It was designed to provide a nationally consistent approach to the provision of services, supports and activities to people with disabilities aged from birth to 65 years of age. Employment in the sector is experiencing significant growth, at a time when public expectations about the quality of service provided through the system's individualised packages of support are higher than ever.

A person-centred model of support (consumer-directed support) had been adopted as part of the NDIS. A funding envelope for each consumer is determined by an assessment of individual needs. Eligible individuals participate in a planning process, and individualised support packages are developed and funded for them. A Quality and Safeguarding Framework (QSF) has been developed to support the quality of service delivery. Policy statements have reiterated the need for a highly skilled and qualified workforce that will deliver high quality services in line with the needs determined in individual plans, and the requirements of the QSF.

Evidence from both Australia and internationally, from the disability support sector and from other human service industries, demonstrates conclusively that high quality support services are dependent on high quality employment standards and training for those who provide those services. Implementation of the NDIS has relied on the sector to recruit, retain and train the growing pool of workers with the required skills to meet the challenges of consumer-directed support. To maximise the potential of the NDIS to deliver a suite of high-quality, individualised services to hundreds of thousands of individual participants, the system desperately needs a strong and immediate strategy to facilitate ongoing investments in workforce development, training, and job quality. This strategy must ensure:

- Wages and working conditions attractive enough to recruit and retain tens of thousands of new workers.
- Good job quality, including employment security, autonomy and recognition.
- The development of a range of appealing career paths in the sector, so that workers can see a positive long-term future working in this field.
- A systematic strategy for training, qualifications and workforce development.

New recruits must be supported to demonstrate their prior skills and learning, and attain additional training for which they are recognised and credited. And all disability

support workers must have access to ongoing training, to broaden and update their skills throughout their careers, accumulate more credentials, and pursue recognised career paths.

Unfortunately, research regarding the initial experience with the NDIS demonstrates that insufficient attention has been paid to the importance of workforce training and development, as a crucial precondition for high quality service delivery. Specifically, research is revealing that providers experience difficulties in recruiting new staff; that conditions of work have become more difficult; that most workers are engaged in casual, part-time, and irregular positions, and that staff turnover is horrendously high; and that there has been a consequent reduction in the quantity of training (including in-house supervision and support) provided for employees, just as workers need more skills to fulfil the goals of the NDIS. This situation poses a significant risk for the quality of life and safety of NDIS participants, for the job quality and opportunity of disability service workers, and for the organisational stability and success of providers.

Inadequacies in the pricing/costing model at the heart of the NDIS are a central factor in these inadequate outcomes in the realm of skills and training. Specified costs for individual packages of support supposedly include a component for training of workers, along with other workforce and administrative overhead costs. But the resources allocated to these activities within the NDIS pricing model are woefully inadequate, based on outdated and incorrect assumptions about the range and level of skills, knowledge and competencies needed to successfully perform work in the sector. Moreover, there is no clear and consistent strategy for defining qualifications, and ensuring that workers get the training they need.

Increased investment in training for disability support workers is important for improving the lives of people with disability. Some of the skills needed by disability support workers are general ones – but they still need to be learned; and people with disabilities deserve to be provided with the assurance, through recognised qualifications, that those providing them with support have achieved a recognised level of competency. Moreover, some people with disabilities have diverse, complex and varying needs. Providing individualised supports under the NDIS needs a workforce that can provide specialist as well as generalist skills; and also be highly adaptive in response to the individual and changing needs of each person they support.

Achieving the full positive potential of the NDIS, and ensuring that participants receive the high-quality, individualised services that the scheme was intended to provide, will require a thorough commitment to high-quality, well-funded training for everyone working in the system. A far-reaching change in culture is necessary, one that

recognises the value of ongoing and substantive investments in training and professional development as the foundation for delivery of high quality support services. This will require a comprehensive and systematic approach to training. In short, the sector needs a holistic, ecosystem approach to meeting its skills challenges, through a system of qualifications and career paths with internal consistency and integrity, supported by a national infrastructure for developing, delivering, quality-assuring, certifying, funding and tracking training. Benefits for workers, participants and providers from this approach would include the promotion of high industry standards, making the industry a more attractive place to work, establishment of clear and more stable career structures, and a better basis for workforce planning.

This paper describes the dimensions of the skills and training challenge facing the disability services sector as the NDIS is rolled out. It proposes a comprehensive strategy for addressing training needs, including both immediate induction and foundation programs to provide new entrants to the workforce with basic skills and qualifications, and an ongoing portable scheme through which disability service workers accumulate regular entitlements to training opportunities – and then utilise those entitlements to undertake career-long training in the specialised topics which they choose. A well-defined and regulated structure of qualifications and career paths will assist workers in leveraging that ongoing training into ongoing occupational progression. Workers will come to see this sector as one offering great opportunities for learning, training, advancement, and compensation – rather than as an industry dominated by irregular, unsupported, and often isolated short-term “gigs.” That will lay the foundation for a more successful recruitment and retention strategy by service providers, as well as for much higher-quality service provision to people with disabilities.

This report has been developed on the basis of analysis of official statistics, published research, and original interviews with key informants. Our recommendations include:

- Ensuring that training is directed towards nationally recognised and transferable certifications, overseen by industry-recognised authorities, and integrated with career pathways for workers in the sector.
- Linking the accumulation of training to the establishment and implementation of minimum training requirements for specific types of support.
- Large-scale roll-out of induction training to ensure that new hires have basic levels of skill, knowledge and experience prior to working with NDIS participants.
- Registration of NDIS-funded disability support workers, in part to facilitate ongoing accounting of their training credit accumulations.

- Establishing a separate and protected Capacity-Building Fund, housed within the NDIA, to fund training activity across the sector – including courses for individual workers, and group training and capacity-building at the organisational level.
- Implementing an ongoing system for workers to accrue portable entitlements for training, based on the number of hours that they have delivered NDIS-funded supports, transferable across providers and jurisdictions; and ensuring workers have the opportunity to utilise those credits in accumulating ongoing qualifications.
- Developing a new planning and administrative body, the Disability Services Training Administration (located within the NDIS Quality and Safeguards Commission), to oversee training standards, curriculum development and qualification benchmarks across for the sector, in collaboration with existing VET regulatory authorities.

The paper also presents preliminary fiscal estimates regarding the costs associated with the establishment and operation of this system. It confirms that the costs of providing essential, recognised, and portable training opportunities for NDIS workers would represent a very small fraction of incremental costs of operating the NDIS.

The training program would be phased in over five years, funded through the Capacity Building Fund (jointly endowed by the Commonwealth and State governments in line with the overall NDIS cost-sharing model). This independent funding stream would be established parallel to the unit pricing system that governs NDIS-funded services, rather than being funded from margins embedded within those unit prices (a system which has already proved unworkable). Costing simulations indicate that all elements of the training program (including induction, foundation, and ongoing portable training entitlements for individual workers, the creation of the DSTA, and funding for organisation-level training initiatives) could be funded for a total cost averaging about \$190 million per year. Compared to the anticipated \$22 billion annual cost of the NDIS once fully rolled-out, this represents an investment of less than one cent for each dollar of total payments. That is a very small investment indeed in the skills, qualifications, and career paths that will be essential to realise the NDIS's full potential: both as a system for delivering high-quality care to participants, and as a source of rewarding, high-value work for service providers.

I. Introduction and Overview

The importance of training and human resource development has been high on government policy agendas for decades. Recognised as a tool for both industry and national economic development, governments have made significant investments in education and training from early-childhood through to higher education.¹ However, some areas of the economy have missed out on this commitment, with little attention paid to the need for training and skill development. In these sectors, many jobs are low-paid and insecure, work is perceived as unskilled or low skilled, and the little training available is often limited to narrowly defined “competencies.”

Some sectors have experienced significant skills shortages as a result of this inattention and underinvestment; and organisational exposure to various operational and legal risks has increased as a result of employing insufficient numbers of skilled staff. Nowhere is this more true than in the disability sector, and related fields (including Aged Care Support and Mental Health Support) in the broader community services field. There is no denying the human importance of the work performed in these sectors. But funders and providers have not made adequate recognition of the need for ongoing high-quality training, to support service workers in performing their tasks with the utmost of skill, safety, and respect for people with disability.

In this context, the passage of the National Disability Insurance Scheme (NDIS) Act in 2013 poses enormous challenges and opportunities to a sector which was already underinvesting in skills and training. The NDIS has been described as the largest social reform in Australia since the introduction of Medicare in 1975 (Productivity Commission, 2017; Cortis et al, 2017). It has been designed to provide a nationally consistent approach to the provision of services, supports and activities to people with disabilities aged from birth to 65 years of age. Employment in the sector is growing more rapidly than any other sector; employers are competing with other areas of community services in an effort to recruit and retain workers. This labour supply challenge is being experienced at a time when public expectations about the quality of supports are higher than ever. The sector has been unable to attract sufficient numbers of suitable new employees to meet this increasing demand, let alone to ensure that they have adequate skills and training. The importance of training and workforce skill development to respond to these labour market demands has had a

¹ We note that some parts of the education and training system have benefited from this attention to a greater extent than others. In particular, and of relevance to this report, funding for vocational education and training (VET) has fallen well behind that for higher education in Australia; as have increases in enrolments (cited in Noonan, 2016: pp13 and 19).

surprisingly low profile in public discussions about the NDIS, its goals, and its challenges.

This report focuses on issues related to the supply and demand for skilled labour in the disability sector, and proposes the development of a comprehensive system for investing in ongoing training and skills development. The key components of this system include:

- A mandatory induction/orientation to the industry, and minimum qualifications as a pre-requisite for on-going employment.
- A portable training entitlement that allows workers within the sector to both gain initial qualifications, and then participate in on-going professional development through their entire careers.
- The stipulation of nationally recognised qualifications linked to the Australian Qualifications Framework (AQF), delivered and assessed by public and non-profit training bodies accredited under the Australian Skills Quality Authority (ASQA).
- The definition of clear pathways into advanced qualifications and specialisations, which can guide disability workers in advancing their careers over time (as they accumulate skills and qualifications), and linked to clear classifications in pay and job responsibilities.
- The establishment of a new body, the Disability Services Training Authority, operating within the NDIS's Quality and Safeguarding Commission, and including representatives of people with disabilities, to work in collaboration with existing VET regulatory agencies to develop curriculum, establish qualification benchmarks, and manage the portable training entitlement system.

Research for this report has been conducted on the basis of analysis of official statistics, publicly available policy documents, other published research reports, and original interviews with key informants working in the sector.

The report documents the skills and training challenges facing the current workforce (including barriers to access, current levels of skill, and working conditions), among the wide range of other challenges faced by this growing sector. It suggests a need for increased levels of training across the industry as a whole, which can be best met by developing an integrated training “ecosystem” within the sector to support current and future skills needs.

Section II of the report describes the current disability services workforce, including reviewing existing training practices and documenting the challenges faced during

NDIS implementation. Section III provides an overview of the design, structure and implementation of the NDIS. Section IV discusses in more detail the implications for skills development of the NDIS, identifying the system's current treatment of training needs and its shortcomings. Section V then provides a proposal for a comprehensive training structure within disability services, including all its key components: initial induction and foundation skills, ongoing portable training opportunities, and a regulatory and funding structure underpinning both. This section also discusses the key fiscal parameters of the proposed system. Section VI provides a summary of conclusions and proposed strategies for winning support from all stakeholders (including government) for including a commitment to ongoing, high-quality training as a core component of the NDIS.

II. The Disability Support Services Sector

Describing the disability support services sector is a challenging task, given the incredible transformation that it is undergoing in the wake of the introduction of the NDIS. In addition to state-based disability support services, the sector has always relied heavily on not-for profit service providers, often faith-based. Common categories of service provision included general and specialist services, residential support services, accommodation support, day programs, respite services and transition to work programs. Funding was provided by both the State and Commonwealth levels of government, based largely block funding for specified levels of service provision. This funding generally constituted around 60-80% of total income; with many organisations supplementing their income from charitable donations (PWC, 2012). Block funding meant that providers managed their income based on organisation-specific policies and strategies, including the costs of employing (and training) staff. Currently, it is estimated that there are around 2,000 disability service providers nationally (NDS, 2016). The sector is growing rapidly, however, and competition for the available workforce is fierce – a situation that is exacerbated by simultaneous growth also occurring in aged care, mental health and community services sectors.

WORK AND WORKERS IN THE DISABILITY SUPPORT SECTOR

The work undertaken by the disability support workforce, all the more so under the NDIS, is incredibly diverse and varied. It involves work with people living with disability, providing a person-centred approach to support in a residential, home or community-based environment. Disability support workers may work alongside families and community workers, allied health professionals, diversional therapy assistants, mental health workers, peer support workers, and professionals in mainstream health and education services, or they could be lone workers to deliver services that support the active social and economic participation of NDIS participants in the life of the community and in the Australian economy (Skills IQ, 2017b).

One of the key findings of the 2011 Productivity Commission report which was influential in the design of the NDIS, was that there were no reliable estimates of the exact size of the disability services workforce (Productivity Commission, 2011). Since

then, with assistance from government, National Disability Services² has introduced *Workforce Wizard*, an on-line tool, to collect and analyse workforce data entered quarterly by human resource managers and executives within the disability support sector. Key information sought includes types of employment, organisational growth, turnover rates, working hours and age and gender distribution of the workforce (NDS, 2017). The first report based on this tool was released in July 2017, with an update published in February 2018 (NDS, 2018), based on a total sample of over 35,000 disability support workers.

Data attained through the NDS tool confirm that the disability support workforce is extraordinarily concentrated in casual, part-time, and very insecure positions. Most recent data (NDS 2018) indicates that 81 percent of the workforce are in part-time positions. 42 percent of workers fill casual jobs. Staff turnover is extremely high: around 25 percent per year for the workforce as a whole, and over 35 percent per year among casual employees. The average number of hours that employees work in the course of a week is low and falling: down to just over 20 hours per week. Fewer than 10 percent of the disability support workforce are employed on a full-time and permanent basis.³ Many workers work irregular hours in multiple locations; research indicates many do not receive minimum legal compensation (including for time spent traveling between locations, and other essential job functions; see Macdonald et al. 2018). The workforce reflects a high concentration of women workers, and older workers: 70 percent are women, and 44 percent are 45 years or older (making the sector's workforce one of the oldest of any sector in Australia's economy). The advancing age of the existing disability support workforce only reinforces the need for a comprehensive and ongoing training system for the industry, in order to replace the skills and experience of those older workers who will be retiring within the next few years. In contrast to disability support workers, allied health workers in the sector tend to be younger (64% are aged between 25 and 45), and are much more likely to be employed on a permanent basis.

The precarious instability of work in the sector highlights the need for a systematic and comprehensive approach to training. It is impossible to imagine that the NDIS will be able to fulfil its potential in improving the lives of people with disabilities, on the basis of a workforce that is so overwhelmingly employed in casual, part-time, high-turnover roles. Workers need an opportunity to accumulate skills, and that requires some basic assurances of stability and predictability in future employment. By providing disability

² National Disability Services is Australia's peak body for non-government disability service organisations, representing around 1100 service providers.

³ NDS (2018) reports that only 35 percent of permanent employees (which in turn make up just 19 percent of the total workforce) are employed on a full-time basis, implying that just 7 percent of the workforce fills permanent full-time positions.

support workers, even those working for multiple employers or moving to new positions, with a mechanism to accumulate recognised and portable qualifications, the training strategy proposed here could play an important role in stabilising and uplifting the whole sector's employment practices.

The NDS data also confirm that, in the face of increasing demand driven by the NDIS rollout, there is strong growth in employment in the sector of around 11 percent per year (NDS, 2018). While positive, this growth masks two significant concerns. The first is that growing employment is being driven almost entirely by a growth in casual employment. The growth in casual employment in the sector was 26 percent per year, compared to just a 1.3 percent per year increase in permanent employment (NDS, 2018). Secondly, turnover issues remain a huge concern.

High turnover rates are exacerbated by recruitment difficulties. In the March 2017 quarter, 76 percent of responding organisations had advertised a vacancy to fill a direct support worker role. Of these, 35 percent remained unfilled, with higher than average unfilled vacancies in Western Australia, Victoria, and South Australia. The most common reasons given for difficulties in filling vacancies was a lack of suitable or qualified candidates. This general response masks issues that reflect the unwillingness of candidates to accept employment in the sector in line with the wages and conditions being offered. These include poor wages and conditions of employment, lack of permanent and full-time roles, and the necessity of working irregular/non-social hours and shift work. Other difficulties in finding candidates reflect the greater focus on meeting the individualised needs of people with disability – for example, 22 percent of responses noted that the unfilled roles involved specific job skills (e.g. experience in gardening or horticulture, community access support, etc.), specific demographic characteristics (such as experience working with a specific cultural background), or other skills (such as dealing with people with challenging behaviours) that may be difficult to match with suitable applicants. There is also some evidence of a shift in what employers believe constitutes a “suitable and willing” candidate: providers are placing more emphasis on hiring people with attitudes and values that meet specific participant requirements, as part of complying with NDIS policy to offer choice and control to people with disability. All of these factors reinforce the conclusion that this sector desperately needs a comprehensive training strategy to provide the workforce with all the skills (both general and specific) necessary to fulfil the promise of the NDIS.

III. Implementation of the NDIS

As noted earlier, implementation of the NDIS is probably the most significant social reform in Australia for several decades. The model of services on which the NDIS is based has several distinctive features:

- It adopts a person-centred model of support. Individuals apply for an assessment of eligibility, and once this is determined, they are enrolled. Following this, support packages based on individualised planning are developed and funded.
- It is an insurance-based scheme, assessing costs and funding requirements based on actuarial estimates of life-time participant needs. This includes early investment and intervention in order to facilitate independence, social and economic participation; and to reduce the need for long-term support.

Discussions prior to the introduction of the NDIS Act noted the need for significant change in the sector in order to support achievement of its policy objectives. This involved the creation of a disability support sector “market” with new providers and new types of service offerings. This would allow consumers greater choice in the provision of services based on their individual and local needs. Consumer-directed support⁴ reflects the evolution in service delivery models internationally, where funding is allocated to individuals or families to purchase services to meet personal needs and preferences rather than accessing standardised services (MacDonald & Charlesworth, 2016). The new model has had significant implications for service providers: they must provide new forms of support, adjust to a more competitive market, and manage the costs of employing staff to meet increasing demand. In addition, there are consequent implications for training and skill development, canvassed in the next section of this report.

The NDIS started in July 2013 in four trial sites, and was gradually extended; with roll-out starting progressively in the rest of Australia from 1 July 2016. Full roll-out is expected to be completed by 2019-20. Over the course of this transition an estimated 475,000 participants are expected to be enrolled. Uncertainty remains regarding the precise quantum of new employment that will be generated as the roll-out continues, but all observers agree that the program will require a huge expansion in the disability support workforce. In 2016, the former Chair of the NDIA Board claimed the system would need up to 70,000 new full-time equivalent workers over the coming three years – about one in five of the new jobs estimated to be created in Australia during

⁴ The model is variously referred to in the literature as cash-for-care, individualised funding or personalised care.

the transition period – and this estimate has been repeated by other analysts (eg. Productivity Commission, 2017, p. 323.). This employment growth is happening at the same time as providers are engaged in significant organisational change as they adjust to new service delivery, funding, and marketing arrangements.

The scale of this undertaking is enormous and complex – and not surprisingly has encountered a number a road-blocks. A recent report from the Productivity Commission noted that roll-out is falling behind anticipated targets (Productivity Commission, 2017), with transitional issues posing risks to the integrity of the scheme. In particular, a focus on meeting targets for participant intake has resulted in lack of attention to the development of high quality plans for participants, slower than expected growth in new services, and insufficient growth in the employment of disability support workers. At the same time, information collected by NDS shows that although demand for support services is growing rapidly, 38 percent of providers are unable to keep up with demand, with the key reason being an inability to attract suitably qualified applicants for jobs (NDS, 2016).

In addition to the challenge of increasing the sheer number of workers, providers have also been required to adjust to new funding arrangements, and a new quality assurance framework. Details of these are outlined below. These in turn have had significant implications for training and workforce development, which are dealt with in the next section of this report.

THE NDIS FUNDING MODEL

As noted above, once an individual's eligibility for the NDIS has been determined, participants participate in a planning process with an NDIS representative. The purpose of this planning is to determine the reasonable and necessary supports needed for the participant to experience lives as full and engaged as possible. This is reflected in an individual support plan, and funding is allocated on the basis of what supports are needed. Participants then choose (in line with their plan) what supports they wish to purchase, and who will manage their funding. They have the option to select a registered provider to manage and provide their support, or can self-manage their funds (including directly employing support workers). In actuality, only 7 percent of participants self-manage their plans, with 58 percent opting to have registered providers managing their plans and providing support; and the remainder opting for a mix of agency- and self-management (Productivity Commission, 2017).

Individual plans and packages of support can include capital items (such as assistive technologies) but the two main categories of support involving disability support

workers are *Assistance with Daily Living* (e.g.; assistance with self-care activities) and *Assistance with Social and Community Participation* (e.g.; access to and participation in recreational activities). Where providers employ disability support workers to provide these supports, they invoice the NDIA and are paid out of the participant's individual account.

The basis of payment is derived from a "Reasonable Cost Model" (RCM), which determines prices to be paid for various categories of support. Price guides have been published by the NDIA and consist of maximum hourly payments for different categories of support (with slight variations depending on time of day, complexity of support needs and for remote locations). Hourly payments explicitly require all costs of providing support by a support worker employed under the Social, Community, Home Care and Disability Services (SCHADS) Award by a "reasonable" service provider to be included. Over the period of roll-out, the realism of the pricing model in relation to the costs of providing support and the transparency of the decisions made in respect of price-setting has come under increasing criticism, not only from providers and academics (NDS, 2016; Macdonald and Charlesworth, 2016) but also from the Productivity Commission (2017).

The most robust analysis of the RCM has been undertaken by Cortis et al 2017, whose interest was in exploring the impact of the RCM on disability support providers and workers. Based on an analysis of the assumptions underpinning the RCM, they clearly demonstrate that set prices fail to recognise the nature and value of disability support work (pp. 22-27). This has had significant consequences for employment and training in the sector. Based on a survey of CEOs from registered providers, and interviews and survey responses from disability support workers, identified problems include:

- The pricing model assumes that workers, on average, are paid at Level 2.3 of the SCHADS award.⁵ Under the award, this is the minimum pay point for workers with a Level III qualification; it applies to workers undertaking largely routine work with readily available guidance and assistance. Evidence from employer surveys, in contrast, suggests that they regarded this as an entry-level (rather than an "average") rate. Experienced support workers are employed in higher classifications under the award, and employers need to provide advancement opportunities for these staff in order for them to be retained. Thus the pricing model vastly underestimates the average pay rate for disability support workers.
- The base hourly rate for disability support workers assumes that 95% of a worker's time (excluding annual and personal leave time) is spent in direct

⁵ Classification levels refer to classification for Social and Community Services workers.

participant contact. This allows for just 3 minutes of every hour paid to cover all activities that need to be completed to provide quality supports and comply with the requirements of the award. These include the need for breaks for workers, communication with other team members (for example, handovers at shift changes, or in relation to new NDIS participants), meetings, administration requirements (such as completing shift notes), travel time, and time needed for training, supervision, team meetings and general professional development. The woefully inadequate amount of time allowed for non-contact time activities that are required as part of providing quality support results in support workers frequently working additional hours on an unpaid basis (Macdonald et al., 2018).

- Supervisors are expected to be paid on average at Level 3.2 of the SCHADS Award, with an expected ratio of one supervisor to 15 staff or even higher.⁶ Survey evidence from both employers and workers, however, suggests that supervisors are more likely to be paid at Level 4 or above; and with ratios around 1:10. This is based on SCHADS award requirements that set limitations on the number of people that can be supervised by any one person and the level of complexity needed for supervision. Thus the supervisory ratios and rates assumed by the RCM are clearly out of line with current industry practice. In addition, given that the sector is employing many workers who have no previous experience, it is reasonable to expect supervisory ratios to be lower than this in order to provide adequate oversight of their work while they are learning the job. Thus, the pricing model again fundamentally underestimates the costs incurred by providers in providing the training and supervisory support necessary for delivering high quality services.
- An allowance of 15 percent for corporate overheads is allowed for in the RCM. This includes the costs of governance, training, staff development and back office support. Cortis et al (2017, p.47) cite international literature demonstrating how "... the excessive pursuit of administrative efficiency has caused a steady, self-perpetuating practice of cost-cutting in organisations, which in turn harms not-for-profits and their service users." Unrealistic pricing of corporate overheads in the NDIS pricing model limits the extent to which organisations can provide staff cover when people attend training courses, hold staff meetings, and engage in continuous improvement of their organisational practices.

⁶ The high incidence of part-time work implies that supervisors would likely end up supervising a larger number of employees according to this formula, based on supervisory ratios defined in FTE terms.

Generally, the analysis suggests that the RCM significantly underestimates the costs of employing both support workers and supervisors, to the point where a provider survey found that two-thirds of employers disagreed or strongly disagreed that NDIS pricing allowed them to meet their obligations under the award, or to be able to pay rates necessary to allow them to attract and retain quality support staff (NDS, 2016). Providers were also strongly of the view that the RCM vastly underestimates both the time needed by support workers and supervisors to deliver quality supports and the range of other costs that providers incur in delivering services.

As a consequence, the sector is experiencing significant issues in financial performance. The NDS annual Business Confidence Survey (NDS, 2016) found that 22 percent of providers reported a financial loss in the previous year, and that this had an immediate impact on supervision and training provision. Many reported that they would not be able to continue to provide services at currently NDIA-set prices, and would have to reduce the quality of their services if prices did not improve. Similar findings are reported as part of the Disability Services National Benchmarking Project being completed at the University of Western Australia (Gilchrist & Knight, 2017). This showed a drop in net profit margins (relative to total income) earned by disability service providers: from 4.4 percent to 3.5 percent from 2014-15 to 2015-2016; more worrisome, if disability-related donations and bequests were removed from income, the margin falls effectively to zero. The report notes that providers are paying the costs of transitioning to the new system from their own resources (donations, financial reserves, sale of assets) or by incurring debt. It concludes that many services are likely to close within 2-3 years, or change their service offerings away from disability support to aged care or other human services which offer higher returns (Gilchrist & Knight, 2017, p. 5).

IMPROVING QUALITY

The delivery of high quality supports to people living with disability has been one of the key policy aims of the NDIS. Measures put in place to do this include the Quality and Safeguarding Framework, mandatory Terms of Business for registered providers (mostly focused on provider business processes), and a Code of Conduct (yet to be finalised) for providers and support workers.

The Quality and Safeguarding Framework (QSF) was foreshadowed from earliest policy discussions, and a draft framework was released early in 2015 by the Disability Reform Council. Following extensive consultations around Australia, it was finalised and released in December 2016 (Department of Social Services, 2016). The framework includes both developmental measures to help strengthen the capabilities of people

with disability, disability workers and suppliers of supports under the NDIS, and preventative and corrective measures to ensure appropriate responses to problems that arise.

QSF measures are targeted at individual NDIS participants, as well as the workforce and providers. In relation to workforce skills, the framework includes the following components:

- Developmental: Building a skilled and safe workforce – with the attitudes and skills that meet the needs of participants.
- Preventative: Screening workers – to help ensure that they keep people with disability safe and ensuring workers have the skills for specific roles through provider quality assurance and registration.
- Corrective: Monitoring worker conduct through screening, serious incident reports, complaints and breaches of the Code of Conduct.

Action taken by government to give effect to these measures, however, has been predominantly focused on preventative and corrective measures, rather than developmental ones. The draft Framework sets out an expectation that recruiting and training staff is the employer's responsibility (Department of Social Services, 2016, p. 55), noting the importance of employers ensuring that workers have the right attitudes, knowledge and skills to effectively support participants. It rejects the importance of qualifications being held by people doing support work in favour of the view that the right "attitudes" are more important. It does, however, propose the introduction of a compulsory orientation/induction module for the sector, for registered providers and their employees, as well as registered sole traders. Providers would be required to demonstrate that their workers have undertaken or are scheduled to complete the induction module, either as an e-learning module or as part of their workplace induction and training processes. Thus the QSF introduces for the first time training and development requirements for the sector, but leaves the responsibility for addressing these solely with providers.

Essentially, the Quality and Safeguarding Framework demonstrates a very passive attitude toward the task of quality assurance and workforce development. It is heavily reliant on screening, and investigating complaints and incidents; instead of a positive approach to workforce development that would prevent incidents from arising in the first place. An alternative would place emphasis on investment for capacity-building: attracting people into the industry by supporting long term development of a skilled workforce through providing opportunities for training to allow workers to deliver high quality services that make a difference in the lives of people with disability. We deal in more detail with our prescriptions for addressing this challenge later in this report.

A similar attitude is evident in the discussion paper on the proposed Code of Conduct released by the Department of Social Services in May 2017. The proposed Code is based on a number of national and international frameworks and regulations, aimed at upholding the rights of people with disability as people and as citizens. It includes reference to the need for providers to ensure that staff have appropriate supervision and training to make sure that support workers are able to identify, monitor and act when situations arise that could result in breaches of the Code. This would need to cover training both about the Code itself, and the service standards that they have been expected to comply with. However, it has already been noted that the RCM constrains the extent to which providers are currently able to provide training to staff, in this or any other area.

The draft Code also appears to be based on a simplistic view of ethics and integrity in caring occupations. While there are some behaviours that are clearly unacceptable, it is not uncommon for situations to arise in which a degree of ambiguity is present, and where workers may be required to exercise judgement. Providing quality support under the NDIS requires a degree of familiarity and trust between participants and their support workers which requires time, continuity of care and team coordination. The very nature of the personal relationship between the support worker and the NDIS participant (which may be close enough at times that the participant and support worker see their relationship as akin to a familial one) may involve complexities and ambiguities that support workers may find difficult to navigate. Resolution may require the worker to be able to discuss these issues with a supervisor or manager, in a supportive environment, without fearing that their employment may be at risk. It will require the evolution of practice standards over time, as the industry comes to understand the issues being faced on a day-to-day basis by workers.

In the end the Code places primary responsibility on workers, as the people with day-to-day responsibility for meeting support needs, for meeting the established standards. In addition, there appears to be no provision for a complaints process to involve the worker concerned, or to appeal against an unfavourable decision. Without additional investment in both initial and ongoing training on the rights of people with disability and the practice standards that support workers need to comply with, and an open and positive workplace culture that encourages support workers to be open about any queries they may have about how to deal with situations that they are facing, it is highly likely that it will be workers themselves who experience the consequences of complaints or investigations. This in turn may increase the risk for providers who potentially could find themselves in breach of employment law for failing to properly train support workers – who may later face sanctions for breaches of the Code of Conduct.

A more systematic approach to training in these areas would provide the knowledge and protections that workers need to ensure that they act in compliance with the Code, and gain thorough understanding of how their organisation approaches compliance with the Quality and Safeguarding Framework. Initial approaches give the impression that the NDIS is approaching service quality through a reactive and punitive approach. A pro-active focus on systematic, high quality and nationally consistent processes for training disability support workers in these issues would reduce risk for both workers and providers. While screening and rigorous complaints processes may be necessary, in the absence of high quality initial and on-going training they are unlikely to achieve the positive working environment that is so essential for providers and support workers to fulfil their duties to the utmost.

SUMMARY

The implementation of the NDIS has brought about significant change in the disability support sector. The roll-out requires a substantial rate of workforce growth (likely doubling total employment) over the next 5 years. However, providers are not able to attract suitably qualified workers into the sector; poor pay and working conditions, weak employment security, and limited access to training and development opportunities are significant factors behind this failure. At the same time, pricing caps introduced through the NDIS restrict the ability of sector providers to overcome any of these underlying conditions. While the provision of high quality services is at the heart of the success of the NDIS, little attention or resourcing has been provided to assist providers to recruit and train the new workforce. The Productivity Commission has warned that insufficient workforce growth poses a risk to a successful full roll-out, and will compromise the quality of support that has been promised to people living with disability.

IV. Training, Skills and Qualifications

Quite apart from the rapid growth in employment, there is a need for NDIS workers to be adequately skilled. In this section, we examine the level of skills and training of the existing workforce and the qualifications that are currently available to disability support workers. We then proceed to examine the skills implications of consumer-directed support, those initiatives that have been put in place to support sector development, and the implications of the NDIS pricing model and QSF for training and development in the sector. These set the backdrop for proposals set out in the final section of this report, to develop a nationally based skills ecosystem for the sector.

A common misperception of work in disability services is that it is unskilled and that workers in the industry do not need any special qualifications to work within it. This stands in contrast to the view of clinicians, social workers, disability specialists and participants themselves : namely, that this work requires sophisticated communications skills, a high level of emotional intelligence, and (depending on the complex and varied needs of the participant) specialist knowledge (for example, in relation to particular medical conditions, dealing with challenging behaviour, or understanding the side-effects of medications). In addition to multiple and complex needs, people with disabilities may also need support in managing multiple and complex interactions with government and non-government agencies in the course of addressing their housing, medical, and educational support needs. Internationally it has been argued that many disability services workers do not have the necessary skills or supports required to engage in daily work settings that are varied and demanding (Iacono, 2010). In the Australian context, research has also expressed concerns about the ability of support workers to meet workplace demands (see for example, Health Workforce Australia, 2014), particularly in relation to people with intellectual and cognitive disabilities and other complex needs.

At present there is no requirement for disability support workers to have any minimum industry-relevant qualification. However, analysis of the skills and qualifications of the existing workforce in the lead-up to the introduction of the NDIS confirms that many are in fact very well-qualified. In 2010, a survey undertaken by the National Institute of Labour Studies (NILS, 2010, p. 129) found that 72 percent of non-professionals working in the industry held a nationally recognised Certificate III or IV qualification, with 48 percent of these holding a Certificate IV in Disability. Although not compulsory, the NDIA advises registered providers that a Certificate III or similar is desirable for support

roles (Windsor and Associates, 2014b), and the industry as a whole regards the Certificate III as a base-level qualification. In addition to those holding these industry specific qualifications, a high proportion of the current workforce also have additional tertiary level qualifications. An online survey of 300 respondents undertaken by the Australian College of Community and Disability practitioners between November 2016 and March 2017 found that 31 percent held a Bachelors or Masters degree or graduate Diploma, 28 percent held a Diploma-level qualification, and 38 percent had Certificate III or IV level qualifications.⁷

VOCATIONAL EDUCATION AND TRAINING IN THE SECTOR

There are two qualifications in this sector that are recognised nationally as part of the formal Vocational Education and Training (VET) framework – *CHC 33015: Certificate III in Individual Support (Disability)*, and *CHC 43115: Certificate IV in Disability Support*.⁸ For Certificate III, students must undertake 7 core and 6 elective Units of Competency; and complete 120 hours of work experience (including completing a set of written and practical tasks in the workplace). Qualifications for the sector are overseen by SkillsIQ⁹ (the Skills Service Organisation that covers the disability support sector as part of the wider community and social services area); Certificate III programs are presently offered by 476 different registered training providers¹⁰ (RTOs), while Certificate IV

⁷ Australian College of Community and Disability Practitioners survey, 2016 (unpublished). The survey did not indicate whether the qualifications were directly related to disability services.

⁸ Certificates at Levels III and IV (of the Australian Qualifications Framework) are made up of agreed Units of Competence within an agreed training package. In this instance the disability qualifications are made up of agreed Units of Competence from the Health and Community Services training package. While there are expectations about the amount of time that it is expected that students will be able to complete the qualification in (6 months for Level III and 1 year for Level IV), in reality these can vary significantly based on modes of delivery.

⁹ SkillsIQ is the Skills Service Organisation (SSO) covering workers providing direct client care and support to individuals, including in the disability sector. The role of SSOs in the Australian VET system is to develop and review training packages, in line with decisions made by Industry Reference Committees about future training needs in specified industry sectors. The relevant Industry Reference Committee for the Disability Support Sector is the Direct Client Care and Support Industry Reference Committee. The Committee consists of 2 employer representatives, 6 representatives from peak bodies, 2 representatives from Registered Training Organisations, 3 union representatives and 1 government representative. The two qualifications that are specific to the disability are included in the Community Services Training Package, which is one of 10 training packages that SkillsIQ is responsible for.

¹⁰ In the Australian VET system, RTOs are registered by Australian Skills Quality Authority (ASQA) to deliver VET services. Registration requires assessment against quality standards both for providers and for courses offered. Only RTOs can deliver recognised qualifications that are accredited under the Australian Qualifications Framework, and are periodically reviewed by ASQA for quality assurance purposes. We recognise that the quality of teaching and assessment offered by RTOs in the sector is of concern to some employers, but this is largely a result of underfunding and the failed experiment of private market delivery of VET.

programs are offered by 225 RTOs. No higher-level qualification vocational pathways are formally defined for disability support work, although many people working in the sector have higher-level qualifications in health or allied health disciplines (such as nursing and social work).

For a workforce that is low-paid and works a limited number of hours, there are significant barriers to enrolment and completion of vocational qualifications. There are a large number of private RTOs (including some larger employers that have their own associated training and development arms), but a considerable amount of training is undertaken in publicly-funded TAFEs. The costs of courses vary from provider to provider (and may depend on government-determined eligibility for funding requirements), but can range upwards of \$2,000. A compulsory work placement (of 120 hours), with workplace assessments, is required, along with course work. There is no reliable evidence about the extent to which those completing these qualification are employed during the course of their training (i.e. people may complete courses on a pre-employment basis); whether they pay the costs of their own training; and whether costs of attendance (including paid time off) are met by their employer.

In recognition of the need for workers to complete some minimal level of training to work in the sector, an accredited induction skill set,¹¹ *CHCSS00081 Induction to Disability*, was approved in 2015. It is currently offered by 280 RTOs and comprises four units of competency from the Health and the Community Services Training Packages, all focused on NDIS-specific aspects of the cultural change needed in the sector. These are:

- CHCCCS015 - Provide individualised support
- CHCCOM005 - Communicate and work in health or community services
- CHCDIS007 - Facilitate the empowerment of people with disability
- HLTWHS00 - Follow safe work practices for direct client care.

The *Induction to Disability* skill set is designed for newly appointed disability support workers. It can be included as credit towards completion of the Certificate III Individual Support (Disability) or other national qualifications. Take up of this program by employers has so far been relatively rare.

¹¹ A “skill set” is not a qualification in its own right, but is made up of Units of Competence that have been developed for a qualification. The fact that students have completed those Units of Competence is recorded, and students receive a Certificate of Attainment when they have completed all Units within a skill set.

OTHER TRAINING IN THE SECTOR

In addition to these nationally recognised training qualifications, several other training initiatives have been developed in the sector over recent years.

An additional orientation program, the *Disability Induction eLearning Program*, has been developed by the NDS. It is available through *Carecareers* (a web-based platform associated with the NDS), and is designed for potential as well as newly recruited employees. It consists of five modules that can be completed on-line, in a space of around 4-5 hours, and is largely an introduction to the principles of person-centred support. It has primarily been designed as an introductory training resource for employers, and the pricing structure for access to the modules reflects this.¹² Unsurprisingly, the vast majority of those completing the program are enrolled through organisations. Anecdotally, this is said to reflect the fact that some larger organisations are enrolling all newly recruited staff as a matter of course, with some also using it as part of pre-employment screening tools.

The NDS eLearning induction is a course rather than a qualification: it is not recognised within the Australian Qualifications Framework, and has no formal assessment requirements. Its role is limited to being an information and awareness raising tool for prospective and new employees about the principles underpinning services being offered to people with disability. Anecdotal evidence suggests that it is typically used in isolation from nationally recognised training packages. Two additional concerns with the program were also noted by previous participants: it can be completed on-line without any opportunity to discuss the content with an experienced worker or supervisor, and it does not include any work placement component to expose new workers to the reality of disability support work.

In addition to these induction initiatives, two internet based “hubs” have been established that provide support workers (including those new to the sector) with a range of information about courses, an introduction to the principles of the NDIS, and a catalogue of workshops, webinars and on-line learning opportunities that they could pursue.¹³ Anecdotal evidence suggests that some providers are establishing committees and reference groups to identify training needs and are also putting employer-specific training in place. Little is known about the number of these courses, how many people attend them and the quality of teaching, learning and assessment. In addition, a number of providers are making increased use of digital and on-line learning. While these have the advantage of reaching a larger number of people

¹² Single user access costs \$50; groups of 10-50 users are charged at \$45 per user; and larger organisations can pay a flat fee for a corporate licence for unlimited users for 12 months.

¹³ <https://www.ndp.org.au/learning-hub> and <https://www.carecareers.com.au/courses/>

(particularly people in remote areas) at a lower cost than face-to-face training, they may also contribute to support workers feeling isolated from their colleagues and others in the industry. Some employers are dealing with this by holding staff conferences, in which large groups of staff are brought together, and training makes up a significant component of these events.

SKILLS IMPLICATIONS OF CONSUMER DIRECTED SUPPORT

Earlier in this report we noted some of the implications on training and development of the NDIS rollout – particularly as a result of the pricing model and new mechanisms for ensuring service quality. This section goes into more detail on those issues:– namely, the implications of the consumer-directed funding model for the skills of the workforce; and the need to recruit increasing numbers of disability support workers, many of whom will have no previous knowledge of the sector. It also summarises the limited initiatives that have been put in place to support skills development as the NDIS was rolled-out, and how these represented lost opportunities to invest in genuine training. Lastly we analyse how the pricing model and the quality and safeguarding framework are undermining in practice the goal of developing highly qualified workforce, delivering high-quality services.

As noted earlier, the introduction of consumer-directed support has implications for workforce skills. Because packages of activities and supports are designed around the individual needs of people with disability, the skills needed by the workers supporting them can vary widely. This has led to a perception in the industry that worker “attitudes” are considerably more important than formal training and qualifications in delivering high quality supports. We strongly disagree with this sentiment and argue that to employ people without qualifications (or at least undergoing training) poses an unacceptable level of risk to those that they are supporting, as well as undermining the quality of jobs in the sector. Consumer-directed support requires a wide range of skills. These range from essential areas of knowledge required by all workers in the sector, skills and competencies (foundation knowledge) needed by anyone engaged in direct contact with people with disability, and more advanced skills and knowledge required by people providing support for people with specific conditions or disability-related needs.

There are some general areas of knowledge that all disability support workers must possess regarding the NDIS and the principles on which it is based – irrespective of whatever other skills and qualifications they have. This includes the insurance values underpinning the NDIS, the commitment to increasing community and economic

integration and participation, and the promotion of independence and self-management for people with disability (Windsor 2014b). As noted earlier, these knowledge areas are included in the recognised skill set developed from Units of Competence that are part of the Health and Community Services Training Package, that can be recognised in worker accounts on the Australian Qualifications Framework and can be built on to complete the Certificate III or IV qualification.

The nature of consumer-directed support also requires support workers to have a range of other skills however, and the changing nature of these has been considered by both employer and worker organisations. Surveys of workers undertaken by both the Australian Services Union and the College of Community and Disability Practitioners note the importance of “soft” skills such as an understanding of person-centred and human rights approaches to disability support, interpersonal skills, verbal communication, active listening and being able to manage challenging behaviours. Others, required by workers to undertake changed roles demanded by the introduction of the NDIS, include record-keeping, written communication, time management, computer skills and financial management.

Questions about the ability of support workers to meet the needs of people with complex physical and emotional health needs have also been raised; and responding appropriately to these challenges is one of the key aims of the new training system we propose. This requires support workers to have more advanced skills in aspects of support needed by individuals with specific conditions (eg. autism spectrum disorder, motor-neurone diseases, and others). Some workers may have a particular interest in developing expertise and specialist skills. If the NDIS is to adequately respond to the needs of people with complex needs, training pathways that extend beyond Certificate IV into Diploma and Advanced Diploma level (and corresponding career opportunities that reflect those qualifications) are needed.

In general, the policy shift to consumer-directed support requires a re-think of the knowledge and skills required by the disability support workforce. SkillsIQ, in association with its Industry Reference Committee, is the organisation whose formal role it is to forecast skills requirements for the future. Over recent years, it has undertaken several research projects, based on both an examination of the literature, and interviews with industry stakeholders. Based on an industry stakeholder survey about the skills that would be most needed in the next 3-5 years, interpersonal skills, customer service, communication skills, technological fluency, leadership and flexibility were seen as most crucial (SkillsIQ 2017b),¹⁴ as summarised in Table 1 below. This list

¹⁴ Although this survey was carried out across all industries, 258 of the 1,480 respondents identified themselves as providing direct client care and support services.

of required skills has a high degree of congruence with the skills identified in our discussions with key informants (including several existing disability support workers).

Table 1:

Skills Required by Workers Delivering Care and Support Under Consumer-Directed Support Models

Flexibility (with work times and roles)

Person - centred approaches

Technical proficiency

Cross-sectoral skills and ability (generalist skills and shared competencies for cross - sectoral support)

Understanding the interface between the health sector, aged care and the disability sector

Time management

Understanding about relevant systems and schemas (particularly for 'wrangler' or 'coordinator' roles)

Record keeping (including budgets)

Ability to work independently, autonomously

Strong interpersonal skill set (to build trust and nurture relationships)

Developed communication skills

Cultural competence

Emotional intelligence

Advocacy skills

Customer service skills

Client engagement and enablement - focused

Leadership and management skills

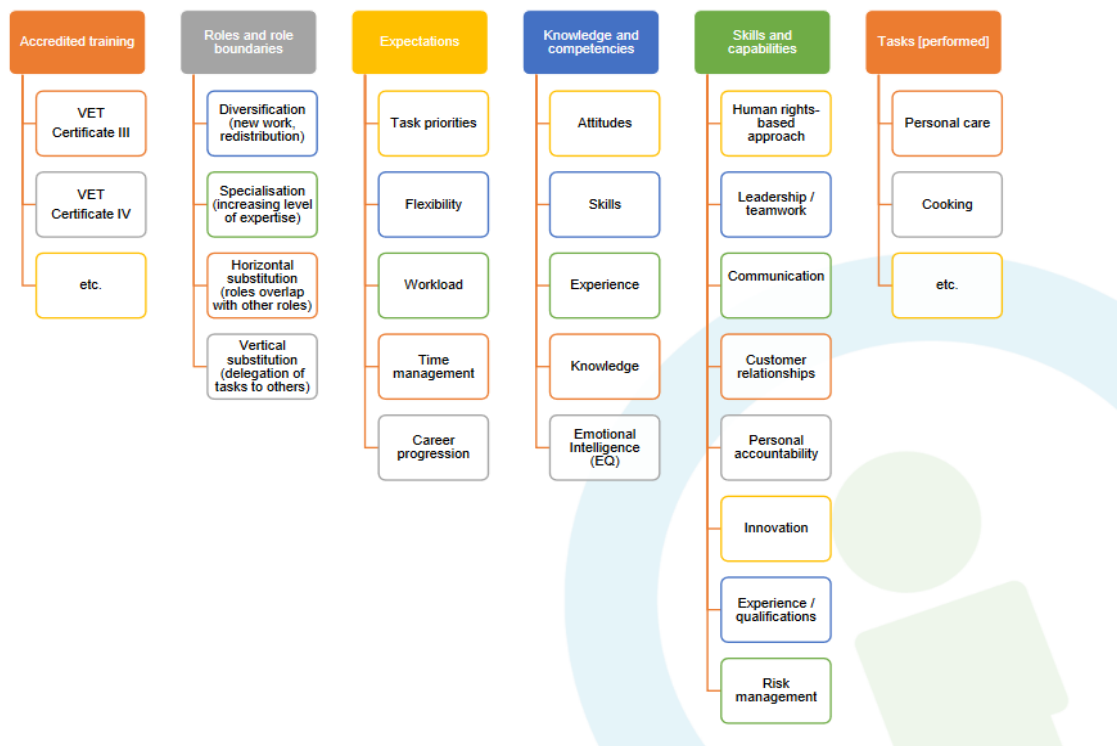
Responsive to the needs of the local market.

Source: Adapted from SkillsIQ 2017a.

The SkillsIQ report notes, however, that there is limited empirical evidence about how these skills are used in practice by workers while performing a support role (SkillsIQ 2017a). In addition, Skills IQ argues that some skills that will be needed have not yet been properly specified. For example, given the need for support to be delivered across specialist services, mainstream services and in collaboration with family and community support, one of the skills most critical in the future is the ability to work across sectors in support of the personal goals of people with disability.

Based on its comprehensive analysis of literature, skills forecasts based on internal expertise, reports on the introduction of the NDIS and interviews with providers involved in NDIS trial sites and other NDIS stakeholders, SkillsIQ has proposed a model (summarised in Figure 1, below) for training needs analysis for the disability support sector, organised into several major domains of knowledge and expertise. It proposes that this model form the basis for empirical research over time to ascertain those skills and competencies that are most necessary for support workers to deliver high quality supports. Importantly, by cross-matching these domains against nationally recognised accredited training, the model establishes a foundation for the establishment of a skills ecosystem for the sector, based on vocational pathways (and corresponding career structures) for workers in the disability support sector.

Figure 1: Analysing Training Needs in Disability Services



Source: SkillsIQ 2017a.

FUNDING FOR SECTOR DEVELOPMENT

The consumer-directed support model also has significant implications for the nature of relationships between people with disability, providers and support workers; and has required what has been rightly described as a culture shift in the industry. In support of this shift, in 2015 the NDIA set out an integrated market, sector and workforce strategy as a vision of what it expected a “mature” and robust disability support market would look like, and how it would function (NDIA, 2015).

The workforce development aspects of the strategy include a number of dimensions. In addition to vastly increased workforce numbers, there is a need for a changing workforce profile that could respond to the needs of a diverse participant base (e.g.; ability to respond to the needs of people of different ages, ethnicities, and needs); and that could meet newly expressed and more complex needs for support. All of these changes would require an innovative approach to workforce management, developing new and differentiated functions and roles, re-designing work and re-deploying workers, and new models of supervision and management.

The integrated strategy is very much based on the recognition that a quality workforce is essential for the delivery of quality services. A Sector Development Fund was put in place in support of the strategy, to assist participants, providers and the overall workforce to transition to the new operational environment. This fund provided \$149M over a period of 5 years (2012-13 – 2016-17) to be directed towards a mix of workforce, provider and participant development needs:

- Increase the capacity of people with disability and their families to exercise choice and control, both in engaging with the NDIS, and in purchasing supports in an open market in order to realise their aspirations.
- Develop a market capable of providing the necessary supports required for full scheme.
- Increase the mix of support options and innovative approaches to provision of support.
- Increase the disability services workforce, making it more diverse and better equipped to meet the needs to people with disability.
- Develop an evidence base to inform an insurance approach to disability support (Department of Social Services, 2015, p. 5).

Despite the acknowledged centrality of a skilled workforce in delivering high quality support, an examination of the operation of the Fund suggests that workforce development requirements were viewed as secondary to community, provider and participant capacity building. The operational guidelines were specific in preferencing

innovative projects that did not duplicate any activity previously funded. This meant that the fund could not be used for ensuring that the workforce had nationally recognised qualifications, and ignored the fact that a critical aspect of expansion of the workforce for sector development simply included a need to scale up existing training provision for new recruits. In addition, a large proportion of funds available through the Sector Development Fund were provided to State-level authorities for disbursement. States applied local priorities for the allocation of funds, while the national priority for ensuring an increased number of skilled workers was left unaddressed. This represented a significant lost opportunity. While the existing system for training disability support workers in nationally recognised qualification may have its faults, providers largely support it as a means of training workers in the necessary skills to undertake disability support work. Had more of the fund been allocated to support development and acquisition of nationally recognised qualifications, this may have helped to address some of the problems around recruitment and retention that providers are facing now.

The Fund was additionally intended to support the development of new models of supervision and work organisation. This led to the allocation of \$5M of the Sector Development Fund to establish the *Innovative Workforce Fund* to fund projects across four funding streams:

- Redesigning support worker roles and testing new work roles.
- Streamlined practices in areas such as human resource management, recruitment and retention of staff and workforce practices.
- Use of technology in workforce practices.
- Workforce development in rural and remote areas.

Of the total \$5M funding, \$1M was paid to the NDS to administer and manage a competitive application process. There was maximum funding of \$200,000 for each funded project and all projects were required to be completed by June 2018. Two funding rounds have been held. The first, announced in July 2017, provided funding to 21 providers, with funding to an additional eight providers announced later in the year. Only headline information is available, however, on the specifics of these projects,¹⁵ and only a minority appear to be directed towards innovation that will provide tangible benefits for the workforce. Neither is information available about plans for evaluations of projects against the objectives of the Sector Development Fund.

¹⁵ See <https://www.dss.gov.au/grants/grants/closed-funding-rounds/innovative-workforce-fund-management>

Overall, many questions should be asked about whether the Fund has represented good value for money. There is evidence that administration of the Fund has been highly unstable, with administration being undertaken by the Department of Social Services from 2012-13; moving to the NDIA in 2013; and being transferred back to the Department in 2014. Little aggregate information is available on what projects have been funded, the extent to which they have achieved each of the five outcomes that the Fund was directed towards achieving, and why some outcomes were accorded higher priority than others (for example, provider development as opposed to workforce development). As a whole, use of the Sector Development Fund has been a lost opportunity to take a nationally consistent approach to systematic training of a large number of newly recruited workers necessary to support sector development over the long term.

While the integrated strategy for sector development set out by the NDIS was laudable, in many ways it represented “magical thinking”: lacking understanding of the operation of real labour markets or the complexity of organisational and industry-wide change and development. For example, the strategy suggests that providers could demonstrate innovative models of service delivery that “...make better use of the talent and skills of the workforce and to stimulate innovation” (NDIA, 2015, p. 21). While the involvement of the workforce has been demonstrated in a number of industries to make a significant contribution to innovation in work processes and organisation, this is most likely to occur in workplaces where workers have a full-time and well-paid job, a degree of employment security that results in them being invested in the future of the organisation, and successful experience with expressing their collective voice in organisational decision-making processes.

ADDRESSING QUALITY ISSUES

As noted earlier, the most important indicators of quality in caring professions relate to the training of staff. This includes both induction and initial foundation training; and the establishment of workplace support for ongoing professional development (such as supervision, reflective practice and opportunities for team support). The draft QSF and Code of Conduct are based on preventative and corrective components of the Framework, rather than developmental ones. This is likely to create a reactive quality culture, focused on screening and complaints, rather than a proactive strategy that supports skills development and capacity building. Essentially the difference between the two is the difference between quality control processes (in which services are measured against whether they meet participant expectations, based on a “tick box” approach) and quality assurance (in which services are measured against a diverse range of quality indicators and processes designed to limit the risk of service failure).

The quality goals for the NDIS are unlikely to be achieved without building a strong induction and training infrastructure that provides all workers in the industry with the skills and knowledge to deliver support services informed not only by knowledge about the principles of the Act, but also by up-to-date and accurate information about the participants to whom they are providing support and working in collaboration with family members and other specialist and mainstream providers. The risks of not doing so can be immediate and consequential. We note, for example, the findings of a recent Coronial Inquiry,¹⁶ where lack of training and back-up for support workers, and poor workplace systems and procedures were implicated in a death at a residential facility.

The draft Code of Conduct in particular has significant implications. It includes reference to the need for providers to ensure that staff have appropriate supervision and training to make sure that support workers can identify, monitor and act when situations arise that could result in breaches of the Code. However, the ASU, in its submission to the Senate Standing Committee on Community Affairs (ASU, 2017), presented evidence showing that only 12 percent of workers felt they were adequately informed about the draft Code. Training needs to address this: providing both information about the Code itself, and the service standards that workers are expected to comply with. However, there are a number of other aspects of the draft Code which exacerbate the risks associated with an inadequate training infrastructure. These include:

- Lack of consultation with workers and their representatives in the development of the draft Code.
- The need to ensure procedural fairness in dealing with any complaints that are made against a worker alleging a breach of the Code.
- Adjustment to the pricing arrangements to ensure that workers and providers have sufficient time to be informed about and meet their quality and safeguarding obligations.

TRAINING IMPLICATIONS

As noted previously in this report, the NDIS pricing model has had significant consequences for training and development in the sector. The most significant of the concerns voiced by workers was a cut-back in the time allocated for training; team meetings having all but disappeared; supervision has been severely curtailed; and large numbers of casual workers are being newly employed with almost no supervision at all. These concerns were corroborated by employers, over a third of whom agreed that

¹⁶ http://www.coroners.justice.nsw.gov.au/Documents/Veech_findings_redacted.pdf.

support staff were not paid to attend regular team meetings or attend training and development activities (Cortis et al., 2017).

Inadequate training and support to do the job will have immediate consequences for quality support services. It means that support workers do not have adequate information to provide support for some NDIS participants, particularly those with complex needs. Neither do they have time to meet with other workers in a support team; or with other people in their organisation. All this is viewed by workers as important for reducing their sense of isolation, for sharing information about those to whom they are providing support, and developing new ideas and strategies about innovative practices.

The reality is that rhetoric about the need for a well-skilled workforce as an essential part of the NDIS has never been matched by the reality of implementation. A well-trained workforce is essential for achieving the quality of support promised by the system, but the experience so far in Australia supports international findings that consumer-directed delivery models tend to pay little attention to the need for long-term workforce development. Market forces cannot autonomously resolve these fundamental shortcomings; it will require pro-active attention and fiscal support to lead the ongoing investments in skills upgrading that the sector requires.

V. A New Model for Training and Qualifications in Disability Services

The previous sections identify existing skills and training practices in the Disability Support Sector; including issues and challenges arising out of the NDIS roll-out. This section looks forward, making recommendations to strengthen training and development as a foundation for delivery of high quality disability support services. We argue in favour of a more systematic approach to training investment, based on the needs of the sector as a whole and creating a comprehensive skills “ecosystem”. Significantly increased government funding for training is needed over the long term in order to achieve the quality of service that has been promised as part of the NDIS. The argument here is for a systematic and holistic approach; based on the following elements:

- Ensuring that investment is directed towards nationally recognised training, overseen by industry-recognised authorities, and builds integrated career pathways for workers.
- Large-scale roll-out of induction and foundation training to ensure that new hires have a minimum level of skill and knowledge as they start work with NDIS participants.
- Mandatory minimum qualifications and registration of disability support workers
- Establishing a separate and protected Capacity-Building Fund, housed within the NDIA, to fund training activity across the sector – including courses for individual workers, and group training and capacity-building at the organisational level.
- Implementing an ongoing system for workers to accrue portable entitlements for training, based on the number of hours that they have delivered NDIS-funded supports, transferable across providers and jurisdictions; and ensuring workers have the opportunity to utilise those credits in accumulating ongoing qualifications.
- Developing a new planning and administrative body, the Disability Services Training Administration (located within the NDIS Quality and Safeguards

Commission), to oversee training standards, curriculum development and qualification benchmarks across for the sector, in collaboration with existing VET regulatory authorities.

THE IMPORTANCE OF A NATIONAL TRAINING FRAMEWORK

There is a need for large-scale and long-term investment in training for the disability support sector to support implementation of the NDIS. Without this, the sector cannot attract sufficient numbers of workers to provide either the quantity or quality of support services needed in order to meet increasing demand. Inability to attract labour is symptomatic of a poorly functioning labour market in the industry. Lack of specified minimum skills requirements means that barriers to entry are low, even for people who have few employment alternatives. It sends a signal to prospective employees that the work is undemanding, when in fact this is far from the truth. Unrealistic expectations about what is required of workers in turn leads to high turnover. In addition, many potential employees are discouraged by poor wages and conditions in relation to work demands, lack of employment security and few opportunities for advancement.

The importance of training for high standards of service delivery in the sector is not contested. The roll-out of the NDIS is based on a well-established evidence base that high quality services support the achievement of life-time goals by individuals living with a disability. Nevertheless, international studies suggest that the skills and training of support workers can shape whether these changes improve or worsen the position of NDIS participants. In particular, three main factors have important effect: the extent to which cost containment underpins the scheme, the regulation and monitoring of service delivery, and the regulation of employment (Macdonald and Charlesworth, 2016, p.629). In the Australian case, evidence collected so far suggests that quality of plans is being compromised in an attempt to meet quantitative targets (Productivity Commission, 2017). In addition, it is the disability support workforce itself that will shoulder the costs of increased flexibility for NDIS participants, with many of the risks associated with increased flexibility (e.g.; last minute changes to the hours during which support is delivered) being transferred from organisations to workers (Cortis et al., 2013).

Australia's Vocational and Education Training (VET) system has evolved significantly over the past 50 years, in response to changing economic and social conditions. One of the most significant of those changes has been the shift from state-based systems to a national training system from 1992 onwards. There were very good reasons for doing

this, which remain relevant today. In particular, having a training system operating at the level of the Commonwealth efficiently delivers qualifications to address national labour shortages, and helps to achieve portability of VET skills across the nation, thus promoting labour mobility (Bowman and McKenna, 2016). It also ensures consistency in training outcomes, so that individuals do not face barriers when moving between jurisdictions and jobs. Bowman and McKenna (2016:43) go on to summarise other advantages of a national system as being:

- *responsiveness*: to industry, individual and community needs.
- *equity*: of access, participation and outcomes for individuals.
- *quality*: in training delivery and learning outcomes.
- *efficiency and public value*: for government-funded VET to be efficiently priced and steered to skills areas that support job outcomes, where this would not be the case if left entirely to enterprises and individuals.
- *sustainability*: by funding the VET system through shared investment by governments (where there is public value), enterprises (private value) and individuals (private value).
- *transparency*: to enable better understanding of the VET system among students so they are able to navigate the system and make informed decisions.

The Australian system can also be placed in the context of the development of VET systems world-wide to respond to the changing economic conditions of the 21st century. As Stanley (2016: p.125) notes, these have often been based on the need for professional standards to be recognised across national borders. Most countries have developed systems for licensing professional standards through accreditation and registration of both training organisations and workers themselves. Training organisations can only be registered where they can provide evidence that they have the capacity to deliver graduates of VET that can meet the standards set by employers across the industry. This commonly includes requirements related to a robust training infrastructure, suitably qualified instructors, course entry requirements and other requirements considered appropriate for effective outcomes.

The foundation for training in the disability support sector should be rooted in national qualifications, accredited on the Australian Qualifications Framework, developed by the appropriate industry regulatory authority on the basis of Units of Competence taught by Registered Training Organisations that have been quality assured by ASQA. The argument that having a national system in place reduces local flexibility cannot be sustained. Bowman and McKenna (2016) have pointed to the advantages of the dynamic tension that exists between consistency and flexibility. For example, providers with a NDIS participant base with specific needs (e.g. meeting the needs of a particular demographic group, or people with a specific type of disability) can provide training for

additional skill sets, on top of the general skills required by all disability support workers.

It is essential that the RTOs registered to deliver qualifications do so to the highest standards possible, and in this area there is room for improvement. We appreciate that the existing VET system in Australia, generally and within the disability support sector, is not without its detractors. Some of these problems have occurred as a result of underinvestment in VET. However, opportunistic behaviour by private, for-profit providers has also contributed to exploitation of vulnerable groups of workers (Myconos et al, 2016; Noonan, 2016). International evidence has also suggested that smaller for-profit training establishments deliver poorer educational outcomes as a result of under-capitalisation poor connections to the wider needs of the industry (Stanley, 2016). In respect of the disability support sector in Australia, particular concerns have been raised about the quality of assessment. We therefore suggest the need for attention to be paid to the following issues identified by the industry:

- Tutors within VET programmes are expected to have practiced the skills that they are teaching to students. Because of the newness of consumer-directed support, there are a limited number of tutors currently working in TAFEs and other RTOs who have experience in this way of working. Efforts must be taken to ensure that tutors (and senior practitioners in provider organisations who are supervising students completing initial training programs) have sufficient knowledge and skills in this area to be able to work with and assess students.
- Compulsory workplace placements have a high degree of support within the industry. However, the quality of assessment of workplace-based competencies may need to be given greater consideration to ensuring validity and reliability. In particular, workers need to be able to not just demonstrate their competency in undertaking specific tasks; but also to demonstrate that they have task management skills (planning and organising, balancing conflicting demands); contingency management skills (knowing how to respond to unexpected events, correcting problems) and job environment management skills (interpersonal skills, team working) that allow skills transfer across different providers (Stanley, 2016, p.132).
- Given the poor experience with private vocational training in Australia, funding should be limited to publicly funded TAFEs and selected not-for-profit RTOs (especially those affiliated to non-profit providers).
- Billett et al (2015) notes that the current VET system is geared towards entry-level learners, participating in training shortly after completing school. This is not the case for workers in the disability support sector, some of whom may be participating in learning having left compulsory schooling some years in the

past, and some of whom may use English as a second language. The needs of older and CALD learners may also need to be specifically addressed by TAFEs and other RTOs in order to facilitate successful engagement with learning by a workforce that is expected to be more diverse in the future.

- There is a need for vocational pathways that extend beyond Certificate IV. We note that the Community Services Training Package already includes some Diplomas and Advanced Diplomas, but these assume a career pathway that moves from direct support into supervisory, policy or management roles. While these are important, there is also a need for pathways into advanced “vocational streams”¹⁷ with higher skills or specialisations at Levels 5 and 6 of the Australian Qualifications Framework, that can be applied in direct support roles (rather than in supervisory roles). Given the increasing concern in Australia with greater continuity across the VET and Higher Education sectors, this would allow workers, if they so choose, to build skills in their chosen areas in ways that could ultimately be recognised for University level study (for example as clinicians). There is an opportunity to do this through the Direct Client Care and Support Industry Reference Committee, on which both the Australian Services Union and the Health Services Union are represented. In particular, electives at this level could be developed to enable workers to develop support specialisations – for example in support for people with particular conditions, or demographic groups.

We believe that with these improvements (and in particular limiting funding to public and selected non-profit training providers), the current national system offers the best hope for building a supportive infrastructure to train the large number of new workers that are entering into the disability support sector.

Recommendations:

1. All recognised foundation training for the industry should be based on qualifications that are registered through the Australian Qualifications Framework.
2. All training should be conducted by public or selected non-profit RTOs, and quality audits undertaken by ASQA to ensure that RTOs have the training infrastructure to deliver educational outcomes that are of the highest possible

¹⁷ “Vocational streams” require an understanding of the knowledge, skills and attributes underpinning related occupations; and stakeholder collaboration and cooperation on workforce issues across a range of institutions (such as government, employers and unions) in a sector (Yu, 2015).

level of quality. Incremental funding should be prioritised towards TAFES as the highest-quality publicly funded RTOs.

3. Vocational pathways available to workers should be extended through the development of qualifications at Diploma and Advanced Diploma level on the Australian Qualifications Framework.

INDUCTION INTO THE INDUSTRY

The draft Quality and Safeguarding Framework recommends the introduction of a compulsory industry induction, to provide a basic knowledge base essential for working in the industry. We are strongly in support of this proposal. The industry desperately needs to recruit more workers, and to retain those workers over time, to avoid a high proportion of organisational resources being spent in constantly recruiting staff. In addition, a number of newly employed workers have had little or no contact with the industry in the past, and are therefore being employed in a completely unfamiliar environment. Anecdotal evidence reports many newly engaged workers leaving the industry after a very short period of time on the job, having been “thrown in at the deep end.” Universal induction would provide newly engaged workers with more comfort and confidence as they embark on the learning curve of their new roles.

Regarding the content of induction training, we noted earlier that there are two existing “induction” packages available for the industry. In our view, these two packages represent very different notions of what constitutes an “induction”. While the NDS package provides some very basic information about disability support, it does not equip workers with skills and knowledge that would enable them to work in even the most basic jobs in the industry.

The accredited skill set put in place in 2015, tied as it is to the Australian Qualifications Framework, provides a more substantive foundation for induction training that goes some way to providing workers with the skills and knowledge that adequately equip them to successfully carry out entry-level positions. We believe, however, that the content of this skill set should be extended in two areas. The first of these would be educating workers about the requirements of the Code of Conduct, providing them with a good understanding of their obligations and what is expected of them. The second is the introduction of a workplace placement for completion of the induction skill set, ensuring that new workers have some contact, under supervision, with people with a disability, and an understanding of the service standards that are expected of

them in relation to that person. We further recommend that all discussions on the content of induction training should include representatives of NDIS participants.

Regarding training delivery, we note that currently the Induction course is delivered via 280 different existing RTOs. Given the large number of employees that will need to enrol in the induction program over a short period of time, capacity building support will be required to train additional industry trainers to deliver induction training; this is especially true within workplaces employing large numbers of new staff, and in rural and remote regions that currently have limited access to RTOs.

Enrolment in induction training should be available on a pre-employment basis for prospective employees considering a career in the industry. This would allow people who have an interest in working in the industry, but who are uncertain or unconfident, to get a better understanding of what work in the industry involves. The workplace component would need to be managed through connections between RTO trainers and local workplaces. This would also deliver advantages to employers, who may be more willing to employ someone who has invested some of their own time in having commenced an induction programme. The cost of induction training for people who have not been hired in a disability support role would be borne by themselves, or by employers who choose to use the induction program as a pre-employment screening mechanism.

Compulsory induction should be completed within 6 months of commencing a job in disability support; workers would not be able to work with clients without close supervision until the induction was completed. New employees would be paid for the time spent on the induction program.

Recommendations:

4. That the content of the new compulsory induction be reviewed (in consultation with all stakeholder organisations, including representatives of people with disabilities) to ensure that it includes a workplace component, and information about the requirements on workers under the proposed new Code of Conduct. Assessment standards should also be introduced to ensure that the learning objectives are achieved by all students completing the induction.
5. That it should be compulsory for employers to support workers to successfully complete the induction programme within 6 months of being newly employed.

OCCUPATIONAL REGISTRATION AND MANDATORY MINIMUM QUALIFICATIONS

As discussed above, there is a strong case for requiring disability support workers to achieve foundation qualifications recognised under the Australian Qualifications Framework. A separate question is whether employment in the industry should be conditional on the achievement of these qualifications; and whether registration on the basis of holding a relevant qualification is necessary. Occupational licensing is common in a number of areas – health care, education from pre-school through to secondary schooling), social work, real estate, and across most trades (e.g.; building and construction, plumbing, electrical work). Occupational licensing requires workers employed in a job to demonstrate that they are suitably qualified to work in that occupation/industry, having achieved a nationally (or internationally) recognised qualification prior to employment in the sector.

Occupational licensing has been the subject of discussions in the disability sector for some time. In the early 2010s, the NDS established a project entitled *Roadmap to a Sustainable Workforce*, which amongst other things, considered entry requirements for the disability sector workforce (Windsor and Associates, 2014b). The working party whose discussions formed the basis of the report noted that most employers already had in place basic training and induction to ensure compliance with regulations associated with the disability sector – including manual handling, first aid, infection control, administration of medication, food safety, fire safety, and health and safety. It also noted considerable interest in developing a standardised industry-based approach to induction, for the purposes of managing costs, improving quality and reducing duplication of training to facilitate the movement of workers between employers. While the desirability of this as a basic minimum qualification for entry into the sector was recognised, the introduction of the NDIS made it more difficult. Creation of an explicitly competitive market between service providers meant that inevitably providers would use initial induction and training to embed organisation-specific service standards and values to differentiate them from their competitors. In addition, the philosophy of the NDIS, based on consumer-directed support, implies that while workers require a common core of knowledge, the needs of individual people with disability vary, and so inevitably must the skills needed by their support workers. As noted earlier, however, it has now been proposed that an industry induction be made compulsory.

Suggestions for a mandatory minimum condition of entry for the industry have been controversial within the industry. This is despite the fact that, as discussed earlier, almost 80 percent of the current workforce have already completed some form of

vocational or tertiary training (Macdonald and Charlesworth, 2016, pp. 636-637). For example, the 2011 Productivity Commission report recommended against a qualifications requirement or compulsory training for disability support workers (Productivity Commission, 2011, p. 693). The NDS's *Roadmap to a Sustainable Workforce* project (NDS, 2014) also argued for maintaining low barriers to entry to the disability support workforce, despite recognising that training was critical for the maintenance of quality.

In our view, however, these expose the half-hearted commitment of many industry observers to training. While nominally acknowledging the importance of training to the quality of delivered services, these approaches nevertheless focus on containing costs more than optimising service quality. Overall it is difficult to escape the conclusion that opposition to mandatory qualifications is not based on the desirability of minimum standards per se, but rather motivated by reducing the costs for employers associated with training in the context of the current, inadequate NDIS pricing model.

Concerns with the cost of training can be addressed through increased funding to support high-quality training and a modern, flexible regime of qualifications, such as is proposed in this report. Input from NDIS participants and their organisations into the definition of minimum qualifications would also be important in ensuring that the workforce better matches the needs of participants as the training and qualifications system is implemented. Others have expressed concern about the unreliable quality of vocational education provided through “fly-by-night” private VET providers (in the wake of the VET fee-help scandals and other instances of private market failure in vocational training). Again, the solution to these problems is not to abandon the goal of minimum qualifications for workers who provide such critical human services, but rather to ensure that the training system is organised around reliable, high-quality public institutions which deliver training on the basis of a public policy mandate (rather than to earn quick profits); this is why the training system proposed here is centred around public and selected non-profit vocational training.

In this respect, an important precedent has been set by the Victorian Government's announcement that it will establish an independent, legislated registration and accreditation scheme for the disability support workforce in that State.¹⁸ This decision emerged from a 2016 Parliamentary Inquiry into Abuse in Disability Services, following which the government announced a “zero tolerance” approach to the abuse of people with disability. This approach to managing the risk of abuse highlighted, in their view,

¹⁸ See <https://www.vic.gov.au/ndis/registration-and-accreditation-scheme-for-victoria-s-disability-workforce.html>.

the necessity of a registration process to ensure that only workers with sufficient skills and competencies work within the industry. The registration and accreditation scheme is expected to help drive continuous improvement, especially as the disability workforce grows so quickly. The consultation paper makes a clear connection between satisfying the needs of the workforce and the delivery of high quality services. It sets out goals for the disability workforce as including:

- Workers uphold participant rights and treat them with compassion and respect.
- Disability work attracts talented, compassionate people.
- Workers can build a productive and rewarding career in the disability sector.

These goals will be met through a regulatory system that has the following functions, based on international practice in similar jurisdictions:

- Setting enforceable qualifications for entry into the profession and for registration.
- Pre-registration screening (e.g.; police checks, worker screening).
- Accredited education and training programmes (as discussed earlier).
- Maintaining a public register of qualified workers.
- Providing practice guidelines.
- Monitoring ongoing fitness to practice.
- Managing complaints and disciplinary issues.
- Managing prosecutions.
- Collecting and analysing workforce data for the purposes of service and workforce planning.

While the decision to include registration and accreditation requirements in Victoria has been made, a consultation process is asking for feedback from the sector to ensure that the system operates in a way which supports the needs of the workforce, providers and participants. In particular, it raises questions about whether registration should be required for all workers in the industry (including those working in specialist services where there are already existing accreditation processes; and workers who do not have direct contact with NDIS participants); or should be targeted at those performing high risk work (such as those working with those who are particularly vulnerable, participants requiring medication, and people for whom personal services are being performed). Discussion is also being held about whether distinct classes of registration may be needed. For example, provisional registration could be offered to those who are working in the industry and completing an initial qualification under supervision.

Secondly, consideration is being given to whether registration should be mandatory or voluntary. In either case, registration (with public access to the register) would provide assurances that a worker has met registration standards; and only those workers would have the right to use one or more reserved professional titles (e.g.; Registered Disability Support worker). Under a mandatory registration scheme, only registered workers would be able to be employed. Under a voluntary registration scheme, service providers would be entitled to offer employment to unregistered workers (except workers who have lost their registration as a result of misconduct), but those workers would not be able to use reserved professional titles. This would send a signal to NDIS participants that workers were not registered and provide them with more informed choice about the level of skills and knowledge that a worker has.

Introducing a new comprehensive system for accreditation and registration based on minimum qualifications for disability support workers will require time, and transition arrangements will be necessary for workers already employed in the field. In particular, workers who have been working in the industry must have ample opportunity to have their existing experience and skills formally recognised. In addition, many new workers bring to the job skills and knowledge that they have gained in other contexts. Australia's VET system has existing processes for recognition of prior learning (RPL), to give workers credit for skills and knowledge they already possess. Efforts to support workers to apply for RPL in relation to the Units of Competence that will be included within Certificate III and IV qualifications for disability services.

Recommendations:

6. That an accreditation and registration regime be introduced to support improvements in quality standards in the disability sector. Registration should be based on the achievement of a minimum foundation qualification at Certificate III level; with the proviso that newly employed workers enrolled in a Certificate III could apply for provisional registration for up to 18 months.

A CAPACITY BUILDING FUND FOR THE SECTOR

This report is based on the premise that the culture in the industry around training needs to be changed significantly. A systematic approach to training investment, based on the development of a skills ecosystem formed around nationally recognised qualifications, is essential for achieving the outcomes of the NDIS. As we have noted earlier, many workers in the sector experience difficulties in accessing training. Barriers

to access include the cost of training, and finding time to study given long hours of work as pertinent. In addition, many casual workers (who comprise 42 percent of the total workforce; NDS, 2018) miss out on training entirely. While many employers have systems in place for on-job training, much of it is perfunctory and employer-specific, meaning that even where workers are experienced, they are not able to demonstrate their skills to a new employer. While the Certificate III is recognised nationally, and a significant proportion of long-term workers in the industry have completed this qualification, we note concern expressed in the sector about the variable quality of training and assessment (including in RTOs).

Finding the financial resources to support employee training is always a challenge for employers in Australia. This is particularly the case in health, community and social services where the prices paid for services are tightly controlled by government agencies. Within the disability sector, this has been made worse with the introduction of the NDIS pricing model. As noted earlier, this has severely limited the aspiration of providers to provide induction and training. Over half of CEOs disagree or strongly disagree that the NDIS provides pathways for staff to advance their careers; and workers identify restricted time for training as a key consequence of the roll-out (Cortis et al., 2017).

There is a strong case for funding training and professional development for the sector from a separate and ring-fenced Capacity Building Fund that is not tied to participant plans. The Capacity Building Fund would be jointly funded by the Commonwealth and State levels of government (in line with the current cost-sharing model for other NDIS services), and integrated with existing NDIS fiscal structures. At the current time, training is supposed to be funded out of participant accounts, on the basis of tiny margins built into the NDIS unit prices. Quite apart from the fact that prices for supports are inadequate for covering non-contact activities in general, this situation creates an unnecessary competition for resources between NDIS participants and the workers who provide them with services; participants should be guaranteed that workers delivering their services are sufficiently trained and qualified to do their job, but not at the expense of the resources allocated to their individual plans.

The challenges to be addressed by the Capacity Building Fund (CBF) are significant, given the underinvestment in training that is a legacy of the roll-out of the NDIS to date, combined with the need to increase the scale of the system's operations in the coming years. The Fund would have two broad areas to direct investment:

- Funding directed towards training individual disability support workers to develop their skills and knowledge on the basis of nationally recognised qualifications. Individual training opportunities would be delivered in three

stages: induction training, foundation training, and an ongoing portable training entitlement to facilitate career-long training and upgrading.

- Funding for building training and professional development capacities in the industry as a whole, at an organisational level. This would provide fiscal support to providers to build their internal capacity to deliver high-quality supervision and professional development in support of quality standards within their workplaces. It would also support the development of training capacity within RTOs to deliver training to workers in the skills associated with the NDIS’s consumer-directed model.

The specific functions associated with these two areas are described in further detail below.

Individual capacity building

Because of the scale of investment necessary, we suggest the need for individual training in three stages, as summarised in Figure 2. The first stage would be provision of basic induction training for new recruits to disability support roles. This would be closely followed, in Stage 2, by larger-scale funding for those new hires (if they stay with their jobs) to complete foundation qualifications (Certificate III) at public or selected non-profit RTOs, as will now be required under our proposed mandatory

Figure 2: Three Stages of NDIS Training

STAGE ONE	Immediate induction training for new disability support recruits.
	<ul style="list-style-type: none"> • CHCSS00081 for new recruits; available through TAFES and not-for-profit RTOs. • Existing skill set supplemented by workplace experience and training in Code of Conduct and QSF. • To be completed within 6 months of initial employment
STAGE TWO	Foundation training.
	<ul style="list-style-type: none"> • Certificate III. • RPL costs also covered for existing employees to gain recognition. • To be completed within 18 months of initial employment.
STAGE THREE	Portable training entitlement for ongoing upgrading.
	<ul style="list-style-type: none"> • Entitlements accumulated based on compensated NDIS hours worked. • Portable and flexible; leads to recognised qualifications. • Selection of courses controlled by individual workers.

qualifications scheme. Then, in Stage 3, investment is directed towards ongoing and continuous upgrading of the qualifications of workers throughout their careers, through a portable training entitlement.

Ensuring coherence and quality within this three-stage structure will require planning and close administrative oversight. Therefore, we also recommend the establishment of a Disability Services Training Administration (DSTA) to oversee the CBF's training investments, coordinate with other agencies within the vocational education and training system, and oversee administration of accumulation and spending of training credits (through individual training accounts for each disability support worker).

Stage One: Induction to Disability

There is an urgent need for an increase in the numbers of workers with sufficient skills to be employed in the industry. Through the CBF, the NDIA would cover the full cost of compulsory induction training in order to address the urgent need for recruitment of a skilled workforce. There is precedent for this approach, in federal government's funding provided for people training for early childhood education during the early 2000s (see Noonan, 2016).

The intent of the investment is to ensure that:

- Funding is delivered separately from the NDIS pricing model (which pays for delivered services).
- A large number of new recruits can access and complete training in a short time.
- Providers have certainty about the quality of teaching/learning/assessment that new hires are receiving.
- Workers that have successfully completed the training have a better understanding of the service requirements that are expected of them; and having achieved an accredited qualification are incentivised to consider a long-term investment in their employment in the sector.

Stage Two: Foundation Qualifications

In addition to immediate induction training, newly recruited workers must also gain a complete foundation in the knowledge and skills to enable them to provide the high quality, flexible, and individualised supports expected by the NDIS. We recommend the introduction of a registration scheme for disability support workers based on a minimum qualification level at Certificate III level. The NDIA's CBF would cover the cost of in-class teaching and resources (including wage continuation for the workers enrolled in the course); wages paid during on-the-job placement time would be

covered by the employers. Stage 2 funding would also cover the cost for existing workers to have previous training and work experience assessed through the RPL process, to further boost the number of workers with formal foundation-level qualifications.

Stage Three: Portable Training Entitlement for Continuous Upgrading

Stage Three would address the need for developing specialised and advanced vocational streams for the industry, on the basis of ongoing and continuous upgrading of credentials and career paths. This would be achieved by:

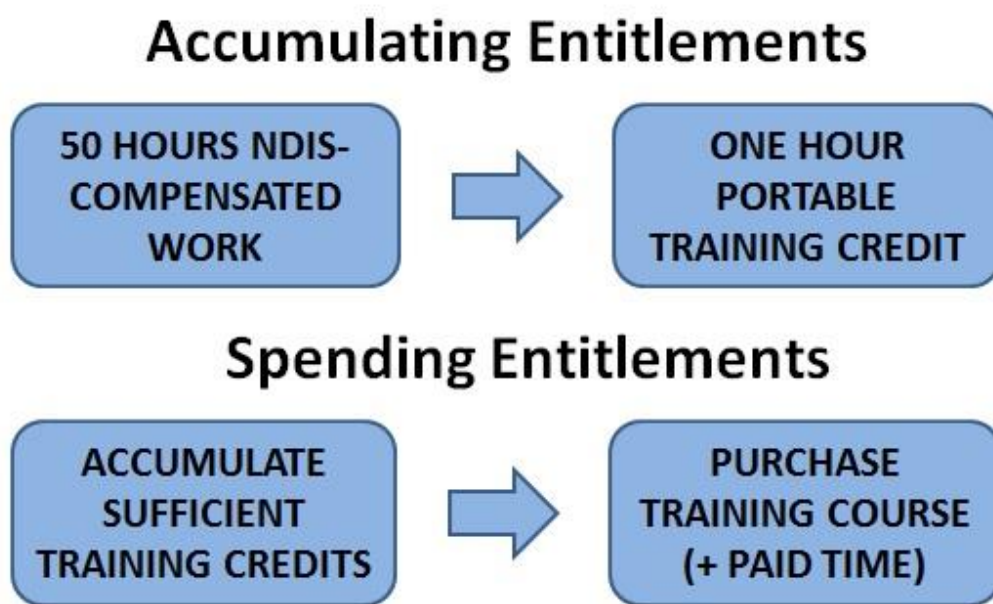
- Establishing an entitlement to paid training, vested with each individual worker, accumulated on the basis of NDIS-funded hours worked.
- Establishing corresponding vocational qualification pathways that extend beyond Certificate IV into specialist Diploma, Advanced Diploma, and University-level qualifications.
- Defining specialised and sub-specialised career paths, integrated with graduated pay scales, so that workers can ultimately get credit for their accumulating qualifications.

To this end, we propose the introduction of a training entitlement, with all workers (including those working on a casual basis) accumulating credit for one hour of paid training, for every 50 hours of NDIS-compensated work. These credits would be “banked” through individual accounts maintained by the DSTA, allowing workers to gain credit for work performed for various or multiple employers. At a 1-for-50 rate of accumulation, this scheme would allow an employee working average hours of work in the industry (around 20 hours per week, according to NDS, 2018) to engage in one 3-day training course (or 21 hours of training) per year. Credits could only be “spent” on Units of Competence that are part of the Australian Qualifications Framework, and delivered through public or selected non-profit RTOs.

Upon becoming employed in a disability support role, workers would supply their unique student identifier (already required as part of the national education and training system) and details of existing qualifications to the DSTA. The DSTA would then create a learning account for each individual, searching previous training records to identify any Units of Competency that might allow the worker to apply for RPL. Workers and their employers would then be notified of the requirement to enrol in and complete the *Induction to Disability* skill set within 6 months. Employers would be required to complete quarterly returns identifying how many hours of NDIS-compensated work each worker has worked over the course of the previous quarter, and their pay; this record of hours worked is converted into credits for paid hours of training at the 1-to-50 ratio. These credits are available to “purchase” training in the

future, with workers choosing the specific topics and timing for training; workers would be paid for the time spent in training by the NDIA (through the CBF), at the average rate of pay they experienced on NDIS-compensated work over the previous year. Once a worker enrolls in a qualifying course, credits would be “debited” against a workers account (see Figure 3).¹⁹

Figure 3: Accumulating and Spending Entitlements



Many other professions have also established requirements and funding mechanisms to support career-long training and upgrading by workers, on the basis of a certain number of required development days each year (including teachers, many medical and allied health occupations, and others). The proposal here to establish a system to support continuous upgrading for disability support work follows the same logic: in an occupation in which the skills and knowledge of service providers is essential to safe and quality care, it is essential that those providers have opportunity to continuously upgrade those skills, develop specialisations, and keep up with new knowledge and leading practices in their field. Of course, the accumulation and spending of training credits as described would be a minimum entitlement only. Should workers and/or providers elect to make additional investments in training above the minimum entitlement at their own expense, that is acceptable, and those additional qualifications (so long as they are attained at approved public and non-profit RTOs) would be fully recognised within the sector’s vocational qualification system.

¹⁹ We propose that participation in Induction and processes for RPL are not offset against training credits.

There are several important benefits of this portable training entitlement system. Newly-hired workers will begin accumulating training credits as soon as they have completed their required foundation certificate;²⁰ existing employees would begin accumulating credits as soon as the scheme is implemented. Disability support workers accumulate credits for work with any employer (including if they work for multiple employers); they would even accumulate credits when providing services as sole traders directly to individual NDIS participants. This flexibility and continuity is essential because of the fluid and insecure work practices that typify the sector, all the more so as the NDIS market system is implemented. Workers employed on a casual basis, or who switch employers (for example, because of changes in personal circumstances for the participants they were working for), or workers providing services directly to NDIS participants (rather than being employed by a provider organisation), are all equally able to accumulate training credits.

The portable training entitlement system is also fully compatible with the flexible, individualised model of service which underpins the whole NDIS model. After all, the NDIS is organised on the principle that services must be tailored to the specific needs of each participant. For that goal to be realised, it is essential that the workforce providing those services is fully capable of providing a comprehensive range of needed, individual services. This will require ongoing upgrading and development of specialised career paths in dozens of specific sub-disciplines. By endowing individual disability support workers with the opportunity to customise their own advanced vocational path and qualifications, informed by the emerging needs of NDIS participants communicated through the market system, the portable training entitlement system will play a critical role in developing a workforce that can meet the expectations of flexible, individualised care that motivated the creation of the NDIS in the first place.

A critical component of this program is to develop a system of qualifications and matching career paths in a systematic and integrated way. Existing workers who do not have a qualification equivalent to the Certificate III or IV with disability specialisms will be encouraged to complete those or an equivalent qualification (or apply for RPL) as a priority; new workers will be required to complete one within the first 18 months of their employment. Once those basic qualifications have been completed, workers then have personal flexibility in how to use their accumulating training credits. They could be used to pay for any relevant skill sets and qualifications under the Australian Qualifications Framework, or alternatively to undertake specialist courses in specific conditions affecting people with disability, therapists using different modalities, other training that may assist participants with specific needs, or relevant personal

²⁰ Costs associated with the induction and foundation courses offered to new workers in the sector are directly covered by the CBF, not paid through the individual training accounts.

development activities which individual workers may be interested in. In conjunction with existing VET governance practices, higher-level qualification pathways will be defined so that workers' ongoing training can be reflected in recognised, portable qualifications.

Sector capacity building

In addition to these three stages of training opportunities for individual employees, the program would also provide direct funding to provider organisations for selected workplace-level training initiatives, as well as establishing a system to consistently administer course curriculum and related qualifications. There are two specific sector-wide priorities which would be addressed and supported by the CBF:

The first is to address concerns that have been expressed regarding the variable and inconsistent quality of training and assessment in existing training programs for disability services, and about the ability of existing RTOs to teach the new competencies associated with the NDIS model of consumer-directed support. The CBF would support up-front investments in curriculum, resource, and professional development by publicly-funded and selected non-profit RTOs to upgrade their capacities in these areas.

There is an even greater need for ongoing investments to ensure that provider organisations are able to provide continuous training and supervisory support to their workforce as the transition occurs to the NDIS delivery model. Priorities would include the development of practice standards, establishing new systems for team meetings and supervision, and more.

Support by the CBF for these organisation-level capacity enhancements would be delivered on a grant basis, with interested provider organisations and RTOs submitting applications, and resources allocated from budgeted amounts by an independent jury of sector experts appointed by the DSTA.

Recommendations:

7. That an independent Capacity Building Fund be established under the NDIA, jointly endowed by the Commonwealth and State governments, separate from the funding mechanisms associated with the NDIS unit pricing system.
8. The Capacity Building Fund would cover the full costs of compulsory induction and foundation training for newly hired disability support workers (and the cost

of completing RPL procedures for existing workers), as a means of quickly boosting the number of skilled workers in the industry.

9. The Capacity Building Fund would also cover the costs of a portable training entitlement system, under which disability support workers accumulate credits for paid training hours and then utilise those credits to enrol in qualifying courses.
10. The Capacity Building Fund would also fund organisation-level investments in training capacity, by both public and qualifying non-profit RTOs, and by disability service providers.

COST ESTIMATES

Cost simulations have been developed to estimate the fiscal dimensions of the training program, including estimates for each of the major components, based on reasonable assumptions regarding the number of participants, benchmark training costs, and other parameters.

Several studies have estimated that the overall disability services workforce will double in size in coming years as a result of the full roll-out of the NDIS. This will involve the recruitment and placement of 70,000 new full-time equivalent (FTE) positions. We assume that initial “surge” in hiring is completed over the first four years, following which the flow of new recruits to the industry slows to a steady-state rate of 5,000 per year. Our costing simulations assume that two-thirds of the NDIS workforce consists of individuals performing broadly-defined disability support functions – excluding those in otherwise recognised and regulated allied health professions (who are already integrated into well-defined training and qualifications regimes of their own), and those performing other tasks and functions which do not generally involve direct disability support skills (including office and administrative staff, transportation services, maintenance, etc.). Based on existing average working hours in the sector, we assume that FTE positions are converted into headcounts at a ratio of 1.5. For the induction and foundation stages of training, we assume that all new workers will complete these programs. For the portable training entitlement, we assume a 90 percent utilisation rate of earned credits.²¹

²¹ Of course, the goal of the program is maximum take-up of earned credits, but in reality some small proportion of entitlements will never be utilised due to workers exiting the industry, scheduling issues, etc.

Stage One: Induction

This is a minimal induction training package provided to new workers starting with NDIS providers. It would involve 30 hours of on-line and face-to-face orientation to the goals and principles of the NDIS, and core features such as the code of conduct and basic safety practices; and 20 hours of supervised contact with people with disabilities.

We assume the time in training is paid according to Level 2(1) of the SCHADs award induction pay classification (currently just under \$25 per hour), and a relatively small per student cost for course resources and materials (\$250 per student); given the large number of students participating, course resources and instruction can be developed and delivered at large scale, with consequent savings in unit cost. We assume the program would train 70,000 new inductees over the first four years (representing two-thirds of the estimated 105,000 new hires, equivalent to 70,000 FTE workers, entering the sector). The stage one induction program would thus cost \$30 million per year for the first three years, \$15 million in the fourth year, and \$7.5 million per year thereafter (as the mass induction program was reduced to a steady stream of 5000 new inductees per year).

Stage Two: Foundation (Certificate III)

This foundation entry-level course would be required for all new disability support workers within the first 18 months of their employment in NDIS-funded service delivery (unless they already possess relevant Certificate III or IV qualification or equivalent RPA). The *Induction to Disability Skill Set* (described above, to be completed within the first 6 months of employment) would count toward this Certificate III qualification. The course involves 90 hours of classroom training, and 120 hours of workplace training and assessment. The classroom time would be paid at workers' normal hourly wage.²² Teacher, resource, and material costs are assumed to equal \$500 per participant (including administration). This represents a cost per participant of just under \$3000, or total costs of about \$60 million per year for the first three years. After the first 70,000 recruits receive their foundation training, annual costs decline to just under \$15 million per year (for an assumed ongoing inflow of 5,000 workers per year).

Stage Three: Portable training entitlement

The largest element of the comprehensive NDIS training program would be the portable training entitlement system, through which NDIS-providing workers would

²² The costings assume an average wage slightly higher than the induction-level SCHADs 2 induction pay, at \$27.50 per hour, recognising that some participating workers will have already begun advancing through the industry pay scale

accumulate credits toward additional training through the normal course of their work. Training credits are earned as workers complete NDIS-funded work – whether with a provider-employer, or even directly for NDIS participants (working as sole traders). Workers can choose how and when to allocate accumulated credits toward additional training. The resulting credentials would be recognised and portable between employers, and count toward recognised qualifications (Certificate III and IV qualifications, as well as the diploma-level and higher vocational pathways which will be developed as the system is implemented).

Credits would cover the teacher, resource, and material costs associated with the courses, as well as paying the worker their normal hourly wage for time spent in the courses (assessed at the average hourly NDIS-funded compensation received by them during the previous 12 months, as recorded by the DSTA). Workers would earn credit for one hour of funded training, for every 50 hours of NDIS-compensated work.²³ This accumulation rate would be sufficient to allow an NDIS worker logging average weekly hours (currently around 22 hours per week, according to NDS estimates) year-round to undertake one three-day (21-hour) course per year.

Allowing for \$750 per course in teaching, resource, and material costs for a typical 3-day course,²⁴ and with paid time in the classroom evaluated at an average hourly rate of \$35, this results in a total cost of around \$1500 for a typical 3-day course. This represents around 3% of the annual salary, superannuation, and overhead costs for a typical NDIS worker. The cost, pro-rated over the worker's yearly NDIS workload, would add about \$1.30 to the total NDIS-charged hourly cost of their services (less than 2%).

We assume that the portable training entitlement stage of the program will require five years to reach full operation (as workers accumulate new credits, and then identify preferred courses and qualifications to pursue). Once fully phased-in, a total of over 120,000 workers would be entitled to paid training opportunities, at an average rate of three paid days per year. The estimated total cost of the program would thus grow from \$36 million in the first year, to \$182 million per year once fully phased-in.

²³ For new workers, accumulation of credits would begin once they have completed the induction and foundation stages of training described above (since those programs are funded directly by government). For existing workers, accumulation of credits would begin immediately upon commencement of the program.

²⁴ The cost per student for teaching is higher on an ongoing basis than for the entry-level Induction, because of the more specialised, smaller-scale training contemplated.

Total costs:

We have also allowed for administrative expenses of \$5 million per year for the Disability Services Training Authority (sufficient to cover 25 FTE staff plus operational expenses) and related functions. We have also provided for organisation-level investments in training, also financed through the Capacity Building Fund, of \$10 million per year. All costs are covered by the NDIA through its CBF (endowed jointly by the Commonwealth and State governments).

The training program proposed here is ambitious, aimed at meeting the pressing need for skills and qualifications for the growing disability services workforce: including rapid skilling of the large numbers of new recruits coming into the sector, and career-long training and upgrading opportunities for the whole workforce. The immediate costs for induction and foundation courses are significant in the first years of the program, but then abate to modest ongoing levels (required to train a smaller steady-state flow of new recruits to the industry in future years). The costs for the ongoing portable training entitlement are more significant, but take some years to phase in. On average over the first five years of the program, total costs (including administrative and overhead expenses) average just over \$190 million per year. The fiscal estimates are detailed in Table 2.

The total cost of the NDIS is currently estimated to reach \$22 billion for fiscal 2019-20,²⁵ and more in subsequent years. Therefore, the combined expenses for all three stages of the training program, combined with new administrative costs and organisation-level investments, amounts to less than 1 percent of the expected costs of the overall NDIS. In other words, this proposal would involve an investment of less than 1 cent, for each dollar of overall NDIS funding, to develop high-quality skills and qualifications for this ambitious new social program. This is a small investment indeed, given the close relationship between the quality of service delivery, and the skills and capacities of the disability services workforce.

²⁵ See Tale and Buckmaster (2015).

Table 2
Fiscal Estimates for Disability Services Training Program
(\$ million)

Costing Assumptions		Year 1	Year 2	Year 3	Year 4	Year 5	5-Year Average
Stage 1	105K headcount (70K FTE); 2/3 disability support workers; 100% utilisation; 70K trained over 4 yrs, then 5K per yr; 50 hours at \$25 + \$250 course cost.	\$30.0	\$30.0	\$30.0	\$15.0	\$7.5	
Stage 2	105K headcount (70K FTE); 2/3 disability support workers; 100% utilisation; 70K trained over 4 yrs, then 5K per yr; 90 hours @ \$27.50 + \$500 course cost.	\$59.5	\$59.5	\$59.5	\$29.8	\$14.9	
Stage 3	210K headcount (140 FTE); 2/3 disability support; 90% utilisation; phase in to 123K per year trained by year 5; 21 hours per worker per year @ \$35 + \$750 course cost.	\$36.5	\$73.0	\$109.5	\$145.9	\$182.4	
Disability Services Training Authority		\$5.0	\$5.0	\$5.0	\$5.0	\$5.0	
Organisation-Level Investments		\$10.0	\$10.0	\$10.0	\$10.0	\$10.0	
Total		\$141.0	\$177.5	\$214.0	\$205.7	\$219.8	\$191.6
<i>Source: Authors' estimates as described in text.</i>							

IMPLICATIONS FOR THE SCHADS AWARD

A comprehensive new approach to investment in training will have implications for entitlements currently specified in the SCHADS modern award that applies to , including job classifications and pay structure. The SCHADS pay grid covers a range of direct disability support functions, but it is relatively truncated: there is limited opportunity for direct service providers (as opposed to supervisors and managers) to move up in classification and pay. Furthermore,, Cortis et al’s (2017) analysis of the NDIS pricing model suggests that providers are often paying above the minimum pay rates specified in the SCHADS grid, because of the challenge of retaining valued and skilled workers.

In a tightening general labour market, exacerbated by the challenges of recruiting suitably qualified workers for the sector, there may be upward pressure on wages. In the context of the highly constrained NDIS pricing model, this implies that financial

pressures on providers will get even worse. While we recognise that the existing bargaining environment is not in the control of any single party, over time it is reasonable to expect that increased training across the sector (as envisioned under our proposal) should lead to higher pay rates, and a more comprehensive grid of classifications (related to the growing set of qualifications possessed by disability support workers). In other words, the SCHADS system of classifications will need to be extended commensurate with the acquisition by more workers of advanced vocational qualifications; there may also arise a need to ensure parity with workers in other health-related industries. A continual review of the NDIS pricing structures in relation to competencies, qualifications and career paths will be necessary in order to ensure that providers are able to both address their costs in relation to employment standards and improve quality standards.

Another implication of the proposed training scheme for the SCHADS award is the need to specify in the award that workers have a clear and protected right to use their accumulated training hours, and to enrol in courses that they choose.

Recommendations:

11. That parties to the SCHADS award consider how to develop and implement an extended structure of classifications and pay that will reflect the accumulating advanced vocational qualifications attained by disability support workers under the proposed portable training entitlement.
12. That the SCHADS award explicitly recognise the right of disability support workers to utilise their paid training entitlements in working hours, on course and vocational streams of their choice.

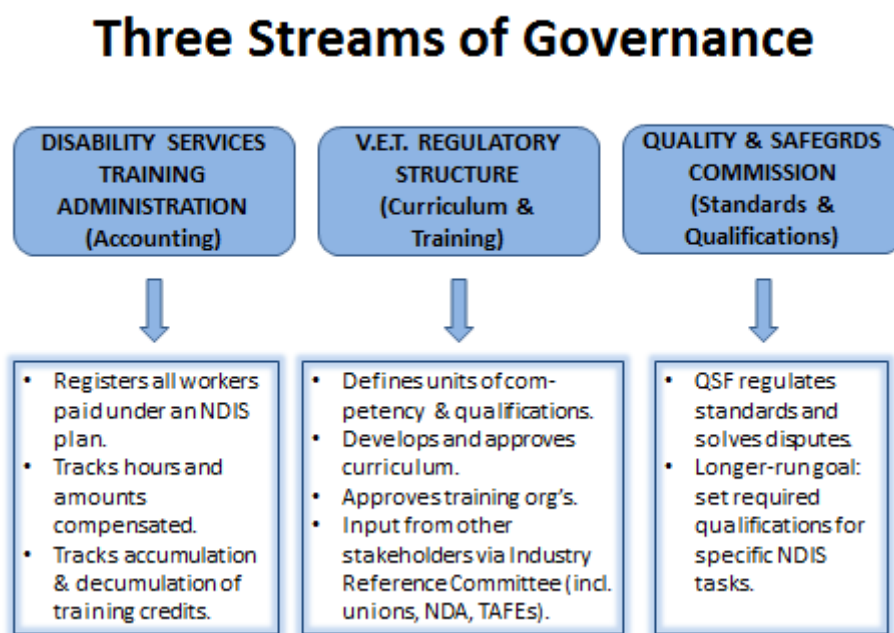
THE DISABILITY SERVICES TRAINING ADMINISTRATION

Our proposals for a new “ecosystem” of training and career-long upgrading in the disability support sector will require consistent oversight, an integrated capacity to account for entitlements, and an ongoing liaison with the NDIA and the AQF. We propose the establishment of a Disability Services Training Administration (DSTA), located within the NDIS’s Quality and Safeguards Commission, to perform four specific functions:

- Ensure that quality and safeguarding standards set by the Commission are supported by initial and on-going training of the disability support workforce, particularly in response to regulatory requirements.
- Work with existing VET authorities operating in the sector to ensure and maintain relevance of qualifications, develop skills pathways that extend beyond Level IV, and facilitate the achievement of a high quality learning environment through RTOs.
- Administer individual learning accounts for disability support workers, including determining the financial value of training credits.
- Champion cultural change within the sector in respect of investment in training and skills development.

The regulatory model envisioned would require the coordination of three channels of responsibility, as summarised in Figure 4:

Figure 4: Regulatory Structure for Proposed NDIS Training Regime



While the DSTA would be located within the NDIS Quality and Safeguards Commission, it should maintain a degree of independence in its governance arrangements.

Accordingly we recommend that the strategic direction and workplan of the DSTA be overseen and coordinated by a Steering Committee that includes the voices of people with disability, a representative group of industry stakeholders (including workforce representatives) and those currently involved in overseeing and delivering training for workers employed in the Disability Support sector.

Recommendations:

13. That the Quality and Safeguards Commission include an independently constituted Disability Services Training Administration (DSTA), with responsibility for tracking the portable training entitlement for workers across the disability support sector, and regulatory oversight of curriculum, training and quality assurance (in collaboration with relevant VET authorities).

VI. Summary and Conclusions

The NDIS is world-leading in its approach to providing supports to people with disabilities. Achieving its vision, however, requires an available workforce that understands the philosophy and values underpinning the NDIS and has the skills and training necessary to deliver the services that are required. It also requires high trust relationships between participants and their support workers, relationships that can only be built up over time, in a context of stable, high-quality work. Current policy settings place a large degree of responsibility on disability support workers, without providing them with the support or quality working conditions they need to deliver high quality services. This is particularly the case in respect of training and skill development. While the necessity of a skilled workforce is nominally acknowledged in NDIS policy documents, the reality is that this goal requires more meaningful funding, leadership, and commitment. Immediate investments are needed simply to recruit and train the large number of additional workers that are needed for the national roll-out in coming years. In the longer term, investment is also needed to ensure continuous upgrading of the skills and qualifications of the workforce. We have argued that this requires a change in the culture of the industry, including a core commitment by its government funders, that recognises training as an investment, and not just a “cost”. Initial and ongoing training must be seen as a necessary part of delivering high quality support services to people with disability.

The proposal developed here for a comprehensive, well-funded training system fits well with the flexible nature of service delivery envisioned under the NDIS. Workers undertake a range of different tasks, for different NDIS participants, depending on shifting needs and demand patterns. Without a training ecosystem that recognises and adapts to that highly mobile work context, the industry will chronically underinvest in training and skills provision, to the detriment of both workers and participants.

Australians with disabilities are excited about the positive potential of the NDIS to meet their needs in a more respectful, flexible, and individualised manner. Society as a whole should be proud of the shared commitment that has been made to better meeting the needs of people with disabilities, and recognise that society will be much stronger thanks to better support and fuller participation. This positive potential, however, is put at risk by a failure to recognise the contribution made to this goal by a dedicated and skilled workforce, securely employed and paid fairly, and capable of delivering the best-quality services possible.

The training and skills development structure that has been described here is feasible, pragmatic, and affordable, and consistent with the founding vision that motivated the development and implementation of the NDIS. By emphasising that a commitment to quality benefits all participants in the sector – people with disabilities, workers, providers, and ultimately government itself – a consensus can be built that investing a very small proportion of total costs (less than a cent in each dollar of NDIS funding) in ongoing training will help to achieve the full potential that the NDIS’s architects hoped for.

LIST OF RECOMMENDATIONS

1. All recognised foundation training for the industry should be based on qualifications registered through the Australian Qualifications Framework.
2. All training should be conducted by public or selected non-profit RTOs, and quality audits undertaken by ASQA to ensure that RTOs have the training infrastructure to deliver educational outcomes that are of the highest possible level of quality. Incremental funding should be prioritised towards TAFES as the highest-quality publicly funded RTOs.
3. Vocational pathways available to workers should be extended through the development of qualifications at Diploma and Advanced Diploma level on the Australian Qualifications Framework.
4. That the content of the new compulsory induction be reviewed (in consultation with all stakeholder organisations, including representatives of people with disabilities) to ensure that it includes a workplace component, and information about the requirements on workers under the proposed new Code of Conduct. Assessment standards should also be introduced to ensure that the learning objectives are achieved by all students completing the induction.
5. That it should be compulsory for employers to support workers to successfully complete the induction programme within 6 months of being newly employed.
6. That an accreditation and registration regime be introduced to support improvements in quality standards in the disability sector. Registration should

- be based on the achievement of a minimum foundation qualification at Certificate III level; with the proviso that newly employed workers enrolled in a Certificate III could apply for provisional registration for up to 18 months.
7. That an independent Capacity Building Fund be established under the NDIA, jointly endowed by the Commonwealth and State governments, separate from the funding mechanisms associated with the NDIS unit pricing system.
 8. The Capacity Building Fund would cover the full costs of compulsory induction and foundation training for newly hired disability support workers (and the cost of completing RPL procedures for existing workers), as a means of quickly boosting the number of skilled workers in the industry.
 9. The Capacity Building Fund would also cover the costs of a portable training entitlement system, under which disability support workers accumulate credits for paid training hours and then utilise those credits to enrol in qualifying courses.
 10. The Capacity Building Fund would also fund organisation-level investments in training capacity, by both public and qualifying non-profit RTOs, and by disability service providers.
 11. That parties to the SCHADS award consider how to develop and implement an extended structure of classifications and pay that will reflect the accumulating advanced vocational qualifications attained by disability support workers under the proposed portable training entitlement.
 12. That the SCHADS award explicitly recognise the right of disability support workers to utilise their paid training entitlements in working hours, on course and vocational streams of their choice.
 13. That the Quality and Safeguards Commission include an independently constituted Disability Services Training Administration (DSTA), with responsibility for tracking the portable training entitlement for workers across the disability support sector, and regulatory oversight of curriculum, training and quality assurance (in collaboration with relevant VET authorities).

Bibliography

Australian Services Union. (2017). *Submission on NDIS Code of Conduct*
https://d3n8a8pro7vhmx.cloudfront.net/asuservices/pages/926/attachments/original/1499038317/ASU_Submission_to_DISABILITY_SUPPORT_SECTOR_on_Code_of_Conduct.pdf 1499038317.

Bentham, E., & MacDonald, F. (2017). *Disability Support work under the NDIS: Initial analysis of workers' experiences*. RMIT, Centre for People, Organisation and Work, Working Paper 2017-1.

Buckmaster, Luke (2016). *Paying for the National Disability Insurance Scheme*, Parliamentary Library, Australian Parliament House,
https://www.aph.gov.au/About_Parliament/Parliamentary_Departments/Parliamentary_Library/pubs/BriefingBook45p/NDIS.

Cortis, N. M. (2017). *Reasonable Necessary and valued: Pricing disability services for quality support and decent jobs*. Sydney: SPRC Report 10/17. Social Policy Research Centre, UNSW.

Cortis, N. (2017). *Working under the NDIS: Insights from a survey of employees in disability services*. UNSW, Social Policy Research Centre.

Cortis, N., MacDonald, F., Davidson, B., & Bentham, E. (2017). *Reasonable, necessary and valued: Pricing disability services for quality support and decent jobs*. Sydney: SPRC Report 10/17; Social Policy Research Centre, UNSW.

Cortis, N., Meagher, G., Chan, S., Davidson, B., & Fattore, T. (2013). *Building an Industry of Choice: Service Quality, Workforce Capacity and Consumer-Centred Funding in Disability Care*. UNSW Social Policy Research Centre, SPRC Report 02/13.

Dale, Tarek, and Luke Buckmaster (2015). *Funding the National Disability Insurance Scheme* (Canberra: Library of Parliament), https://www.aph.gov.au/About_Parliament/Parliamentary_Departments/Parliamentary_Library/pubs/rp/BudgetReview201516/NDIS_

Department of Social Services. (2016). *NDIS Quality and Safeguarding Framework*. Australian Government.

Department of Social Services. (2015). *Sector Development Fund: Strategy and Operational Guidelines*. Australian Government.

- EY. (2015). *Independent Review of the NDIS Act*. Canberra: Ernst and Young.
- Gilchrist, D., & Knight, P. (2017). *Australia's Disability Services Sector 2017: Financial Performance*. University of Western Australia and NDS.
- Iancono, L. (2010). Addressing increasing demands on Australian disability support workers. *Journal of Intellectual and Developmental Disability*, 35:4, 290-295.
- Macdonald, F., & Charlesworth, S. (2016). Cash for care under the NDIS: Shaping care workers' working conditions? *Journal of Industrial Relations*, 58(5), 627-646.
- Macdonald F., Bentham E., and Malone J. (2018). "Wage Theft, Underpayment and Unpaid Work in Marketised Social Care," *Economic and Labour Relations Review* 29(1) pp. 80–96.
- Mavromaras, K., Moskos, M., & Mahuteau, S. (2016). *Evaluation of the NDIS: Intermediate Report*. Flinders University, National Institute of Labour Studies.
- NDIA. (2015). *Integrated Market, Sector and Workforce Strategy*. Paper prepared by the Senior Officials Working Group for the Disability Reform Council.
- NDS. (2014). *Roadmap to a Sustainable Workforce, Project Report Five*, September.
- NDS. (2016). *State of the Disability Sector Report 2016*. Melbourne: National Disability Services.
- NDS. (2017). *Australian Disability Workforce report: July 2017*. Sydney: National Disability Services.
- NDS. (2018). *Australian Disability Workforce report: February 2018*. Sydney: National Disability Services.
- NDS. (undated). *Position Statement: Position on Minimum qualifications for Disability Support Workers*.
- NILS. (2015). *Evaluation of the NDIS: Initial Report*. National Institute of Labour Studies.
- NILS. (2010). *Who Works in Community Services*. National Institute of Labour Studies, Flinders University.
- Productivity Commission. (2011). *Disability Support and Care*. Productivity Commission Inquiry Report No. 54.
- Productivity Commission. (2017). *National Disability Insurance Scheme (NDIS) Costs: Study Report Overview*. Canberra: Australian Government.
- PWC. (2012). *Planning for a Sustainable Disability Sector*. Australian Government: Department of Families, Housing, Community Services and Indigenous Affairs.

Skills IQ. (2017b). *Direct Client Care and Support: Industry Reference Committee Industry Skills Forecast*.

Windsor and Associates. (2014b). *Workforce entry requirements for the disability sector*. Report 4: Roadmap for a sustainable workforce.